

Stand Alone Type
DVR SYSTEM

U S E R M A N U A L

Important Safety Instructions	-----	4
Specification & Organization	-----	5
Specifications	-----	5
Product Contents List	-----	6
System Organization	-----	8
Product Description	-----	9
Front panel description	-----	9
Rear panel description	-----	10
Remote Controller description	-----	11
HDD , CD/DVD–RW Connect	-----	12
Power On	-----	13
Live Display	-----	14
Configuring the live display	-----	14
PTZ	-----	15
Search	-----	16
Normal Search	-----	16
Panorama1 Search	-----	21
Panorama2 Search	-----	22
Smart Search	-----	23
Archiving	-----	24
Archiving	-----	24
Archived Data Management	-----	25
Setup–System	-----	26
Camera	-----	26
Alarm/Event	-----	29
Display	-----	36
Audio	-----	39
User	-----	40
Network	-----	42
System	-----	44
Storage	-----	46

Setup-Record	47
Record mode	47
Normal record	49
Intensive record	51
Panic record	53
Sequence	54
Digital Zoom	55
RemoteSW installation	56
System Requirement	56
Introduction	57
RemoteSW Local Setup	58
local setup	58
RemoteSW Search	62
Search Function Introduce	62
Search Method	63
Search Option	64
RemoteSW DVR System Setup	69
Camera	70
Alarm/Event	71
Display	74
Audio	76
User	76
RemoteSW DVR Record Setup	77
Record Mode	77
Normal record	79
Intensive record	81
Panic record	82



IMPORTANT SAFETY INSTRUCTIONS

- 1) Read these instructions.
- 2) Keep these instructions.
- 3) Heed all warnings.
- 4) Follow all instructions.
- 5) Do not use this apparatus near water.
- 6) Clean only with a dry cloth.
- 7) Do not block any of the ventilation openings. Install in accordance with the manufacturer's instructions.
- 8) Do not install near any heat sources such as radiators, heat registers, stoves, or other apparatus that produce heat.
- 9) Do not defeat the safety purpose of the polarized or grounding type plug. A polarized plug has two blades with one wider than the other.

A grounding type plug has two blades and a third grounding prong.

The wide blade or the third prong is provided for your safety.

When the provided plug does not fit into your outlet, consult an electrician for replacement of the obsolete outlet.

- 10) Protect the power cord from being walked on or pinched particularly at plugs, convenience receptacles, and the point where they exit from the apparatus.
- 11) Only use the attachments/accessories specified by the manufacturer.
- 12) Use only with a cart, stand, tripod, bracket, or table specified by the manufacturer, or sold with the apparatus.

When a cart is used, use caution when moving the cart/apparatus combination to avoid injury from tip-over.

- 13) Unplug this apparatus during lightning storms or when unused for long periods of time.
- 14) Refer all servicing to qualified service personnel. Servicing is required when the apparatus has been damaged in any way, such as power supply cord or plug is damaged, liquid has been spilled or objects have fallen into the apparatus, the apparatus has been exposed to rain or moisture, does not operate normally, or has been dropped.
- 15) This equipment is indoor use and all the communication wirings are limited to inside of the building.
- 16) The socket-outlet shall be installed near the equipment and shall be easily accessible.

17) CAUTION

RISK OF EXPLOSION IF BATTERY IS REPLACED BY AN INCORRECT TYPE.

DISPOSE OF USED BATTERIES ACCORDING TO THE INSTRUCTIONS.

Operation Max temperature : 40°C

USB Load condition: USB Ports(5 Vdc, Max. 500 mA)

SPECIFICATION & ORGANIZATION

Specifications

Operation	PENTAPLEX	PENTAPLEX performance (Doing Simultaneous Live Display/Recording/Playback/Archiving/ Networking effectively without interfering each other operations)
Video in	Channels	16
	Connection	BNC, 1.0Vpp composite 75ohm balanced
	Loop through	BNC, 1.0Vpp composite 75ohm unbalanced, auto termination
Audio in	Channels	4
	Connection	line level unbalanced
Main Displays	BNC	1.0Vpp composite 75ohm unbalanced
	VGA	15 pin D-SUB 1024 x 768 @ 60Hz
	Screen display modes	1, 4, 9, 16 User defined channels for each mode
	Sequence	Adjustable dwell time, user defined sequences
Spot displays	Channels	4 fully programmable
	Connection	BNC, 1.0Vpp composite 75ohm unbalanced
	Display mode	Full screen sequence, adjustable dwell time
Audio out	Channels	1
	Connection	RCA, line level unbalanced
External alarm	Inputs	16(16 Open collector TR), NO or NC common ground
	Outputs	16, high(+5V) or low(0V) selectable, common ground
User interface	On screen display	GUI, alpha blending
	Control	Front panel/IR Remote/USB Mouse
Recording	Video CODEC	MPEG-4
	Resolution options for each channel	CIF (352 x 240, 352 x 288), 2 CIF (704 x 240, 704 x 288), D1 (704 x 480, 704 x 576)
	Maximum total frame rate	480 FPS (NTSC) / 400 FPS (PAL)
	Image quality	Highest, High, Standard, Low
	Pre-event recording	5 seconds max
	Recording modes	Continuous / Motion detection / Alarm / User event / Panic
	Frame rate options for each channel	30 – 15 – 7.5 – 4 – 2 – 1
	Schedule Configurable recording time limits	Weekly / Daily per Camera
Audio	Audio inputs independently assigned to each channel	
Motion detection	16 x 16 selectable grid with 10 levels of sensitivity	
Covert recording	Yes, selectable by channel	
Camera title	English and Numeral	

SPECIFICATION & ORGANIZATION

Playback	Speed	Forward / reverse. 1x, 2x, 3x, 4x, 8x, 16x, 32x, 64x, 128x
	Control	Front panel buttons and Jog / Shuttle ring/USB Mouse
	Search method	Calendar / timeline, event log, Sequence, Thumbnail, Smart Search
	Split screen display modes	1,4,16
	Audio synchronization	Yes, any frame rate
Archiving	Storage	CD-RW (DVD±RW option), USB Memory stick, Network
	Format	Watermarked AVI
	Archive data	Independent channels selection (video / audio), backup log, event log
Time	Time zone	Worldwide, Selectable
	DST	Yes
PTZ	RS-485	Multi protocol, baud rate and speed control for each channel
System	Watchdog	Yes
	Abnormal shutdown detection	Yes, with system auto recovery
	HDD error detection	Yes, SMART monitoring
Network	Connection	RJ45, 10 / 100 Ethernet
	DHCP	Yes
	DDNS	Yes
	Two way network audio	Yes
	Bandwidth management	Yes
Remote client	Client software	Yes, Included
	Remote configuration	Yes
	Remote PTZ control	Yes
	Email event notification	Yes
Storage	Maximum Capacity	Not limited
	Storage	4 x HDD maximum
	Recording options	Write once / Overwrite
Event handling	Source	Alarm in, motion detection, video loss, HDD error, User event
	Action	Record, alarm out, email notification, log, remote client popup, buzzer, full screen popup
Security	User levels	ADMIN, MANAGER, USER
	Key Lock	Yes, password protected
Physical	Dimensions	428mm(w) x 475mm(d) x 93mm(h)
	Weight	12Kgs

SPECIFICATION & ORGANIZATION

Product Contents List

Please confirm that all product contents are present after opening the package.

① Basic Contents



AC Power Cable



Instruction Manual



Remote Controller



Remote Agent
Installation CD



AAA Battery x 2

② Optional Contents



Internal Hard Disk Drive



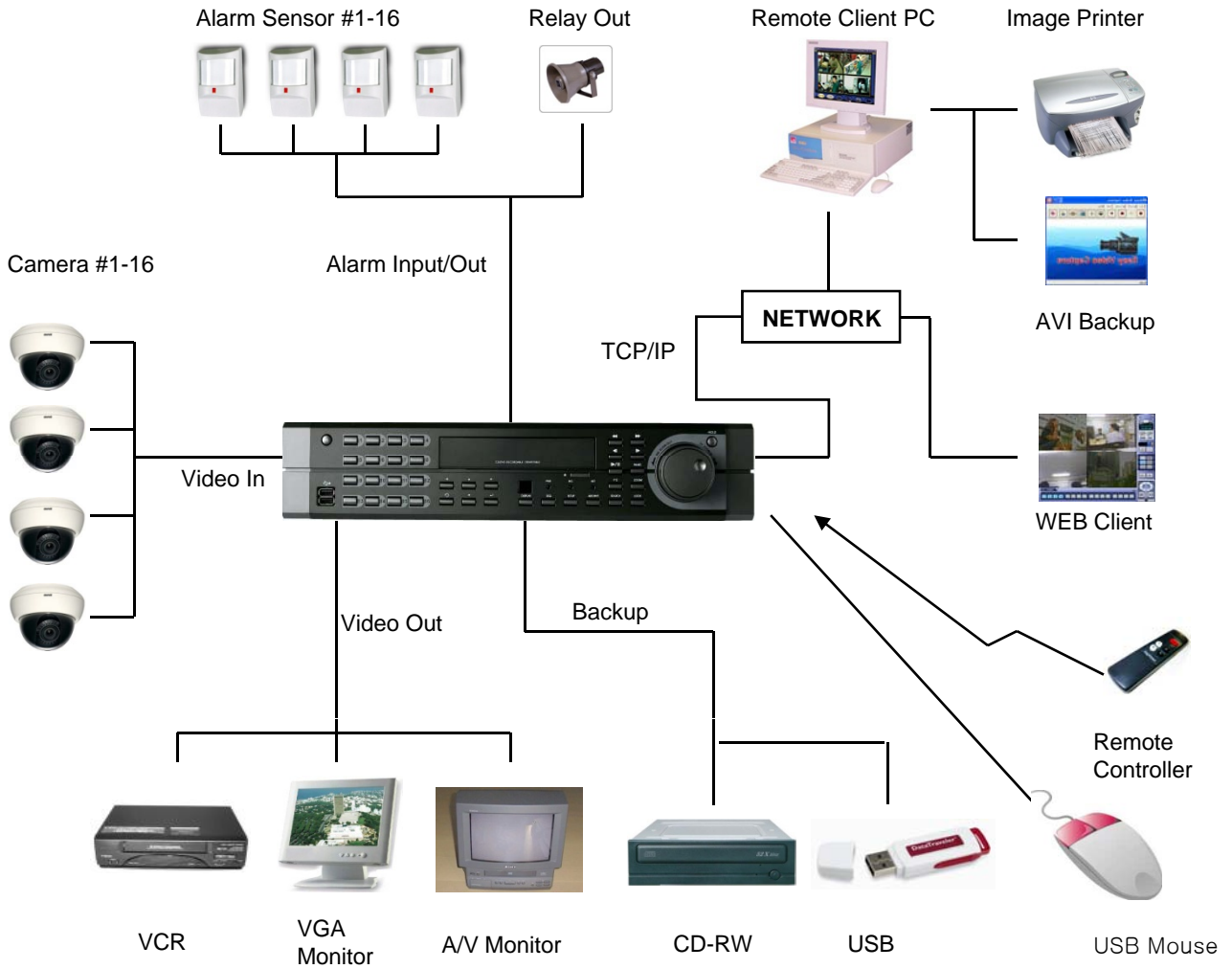
Internal CD-RW/DVD-RW Drive



USB Thumb Drive

SPECIFICATION & ORGANIZATION

System Organization



PRODUCT DESCRIPTION

Front Panel

POWER BUTTON

DISPLAY

Selects various display modes in live display and playback

SEQ

Calls the currently defined sequence mode

PANIC

Selects panic recording mode

ZOOM

Selects digital zoom mode in live display

LOCK

Locks the front panel buttons

ARCHIVE

Displays the archive menu

PTZ

Selects PTZ mode in live display

SETUP

Displays the setup menus

SEARCH

Displays the search menu

SHUTTLE WHEEL

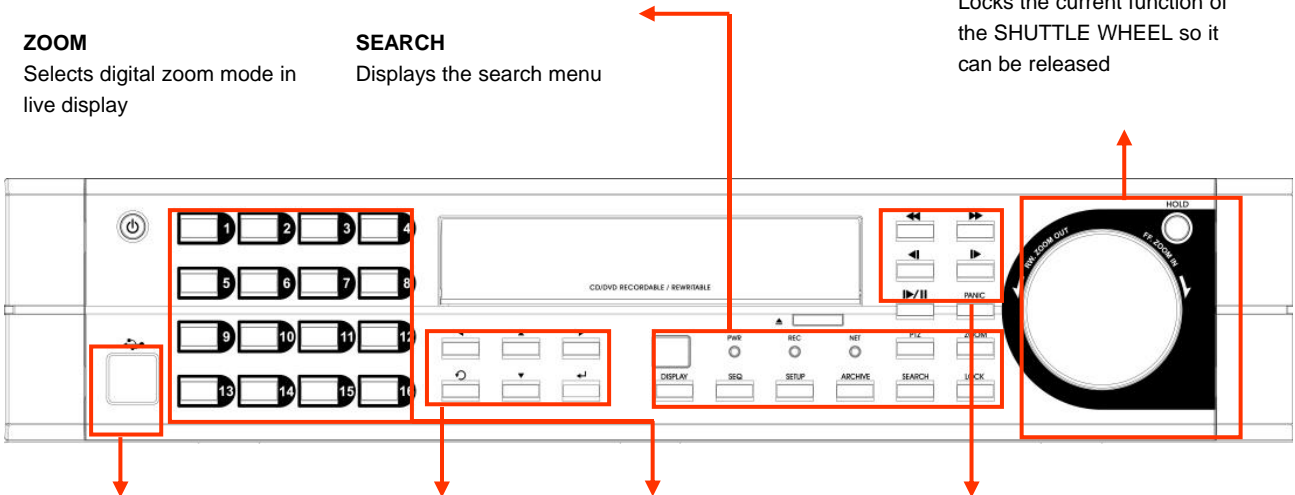
Used to quickly adjust playback speed and direction. Also used to control camera zoom when in PTZ mode, and digital zoom level in live display

JOG RING

When playback is paused, used to move footage forwards or backwards, frame by frame

HOLD

Locks the current function of the SHUTTLE WHEEL so it can be released



USB ports

Supports a wide variety of USB memory stick for archive, system setting backup and firmware upgrade. An additional USB port is also provided on the rear panel

CURSOR KEYS, ENTER and RETURN buttons

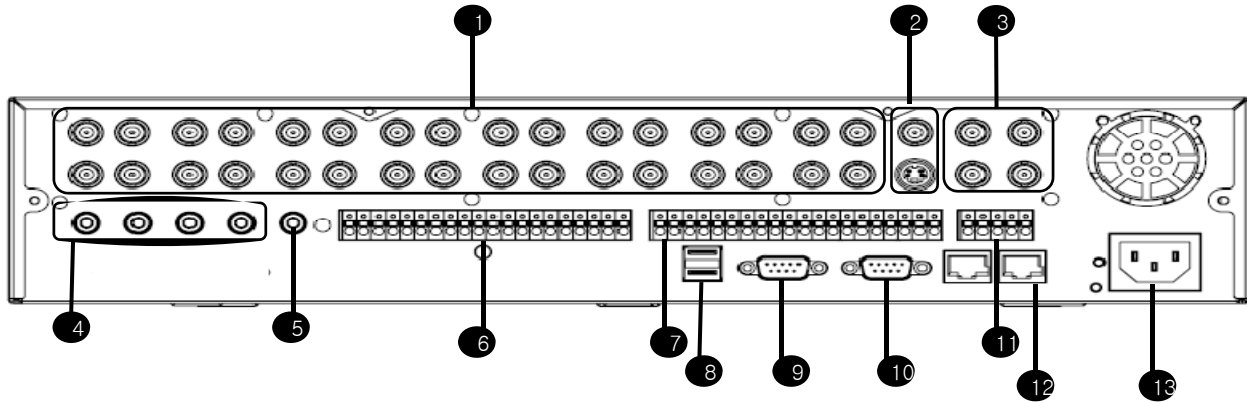
Used for navigating setup menus, search and archive screens. Also used when the DVR is in PTZ mode

CHANNEL SELECTION BUTTONS

Used to display individual channels in live display and playback Also used to enter numeric passwords for the various login screens

- ◀◀ Increases reverse playback speed
- ◀ Selects reverse playback
- || Pauses / resumes playback
- ▶ Selects forward playback and also accesses the instant playback feature
- ▶▶ Increases forward playback speed

Rear Panel

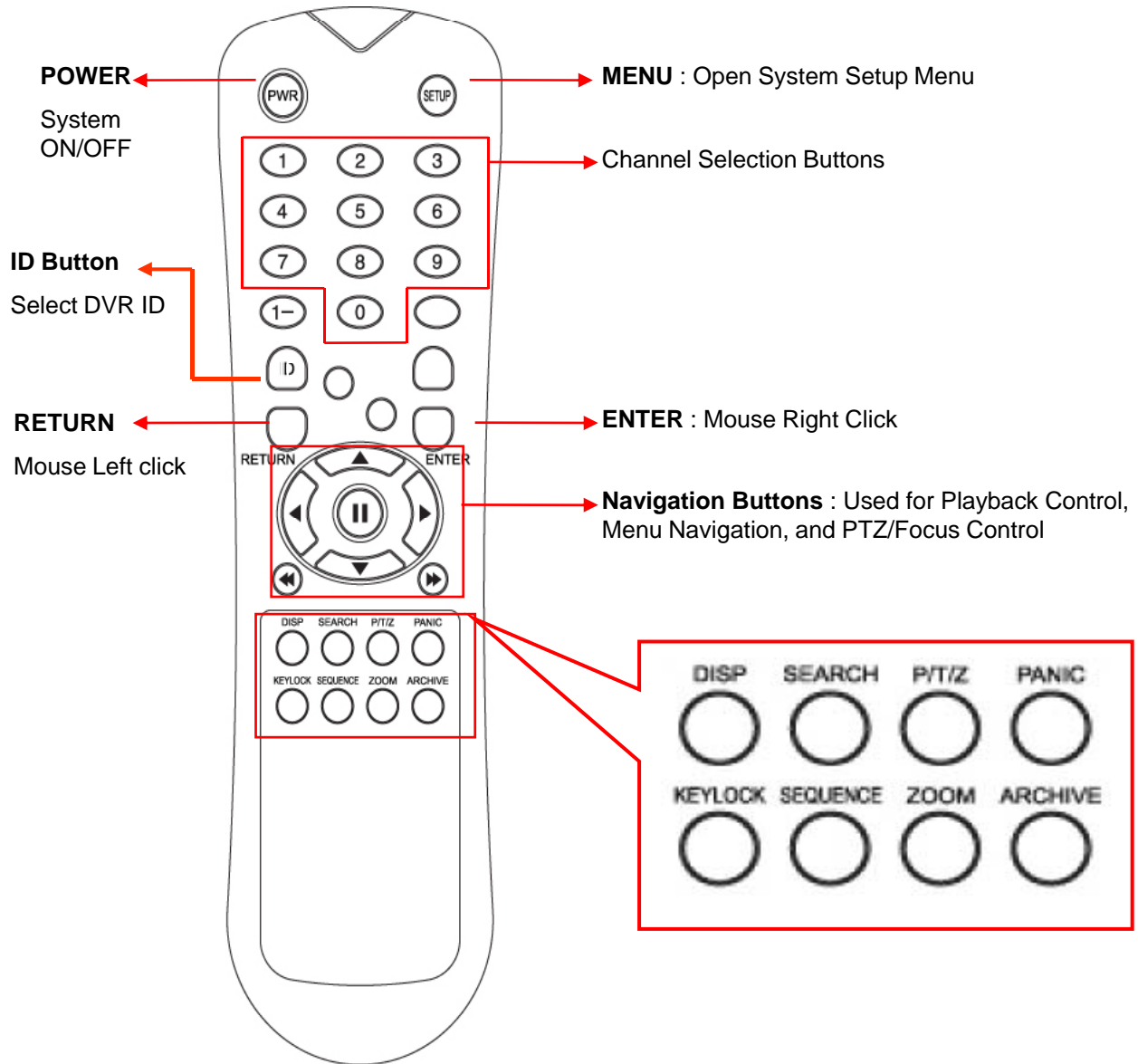


- ① Video IN / Loop : BNC Video Input Port, BNC Video Loop Output
- ② Monitor out : BNC Main Monitor Output
SVHS : Output Video by Connected SVHS.
- ③ Spot #1 ~ #4 : 4 x BNC Output to Individually-Sequenced Spot Monitors
- ④ Audio In : 4 x RCA Audio Line Input Terminal
- ⑤ Audio Out : RCA Audio Line Out Terminal
- ⑥ Alarm : 16 x Input TTL Alarm/Sensor Input Terminal
- ⑦ Relay : 16 x Relay Output Terminal
- ⑧ USB PORT: USB Port for use of a USB Memory Stick and/or USB HDD Backup
- ⑨ VGA OUT : VGA Main Monitor Output
- ⑩ RS-232C : Serial Configuration Port for Program Debugging
- ⑪ RS-485 : Serial Interface for PTZ device connection and control
- ⑫ RJ-45 jack : 10/100 Ethernet LAN/WAN connection (for Remote Access and Configuration)
- ⑬ AC Power Input

Tip

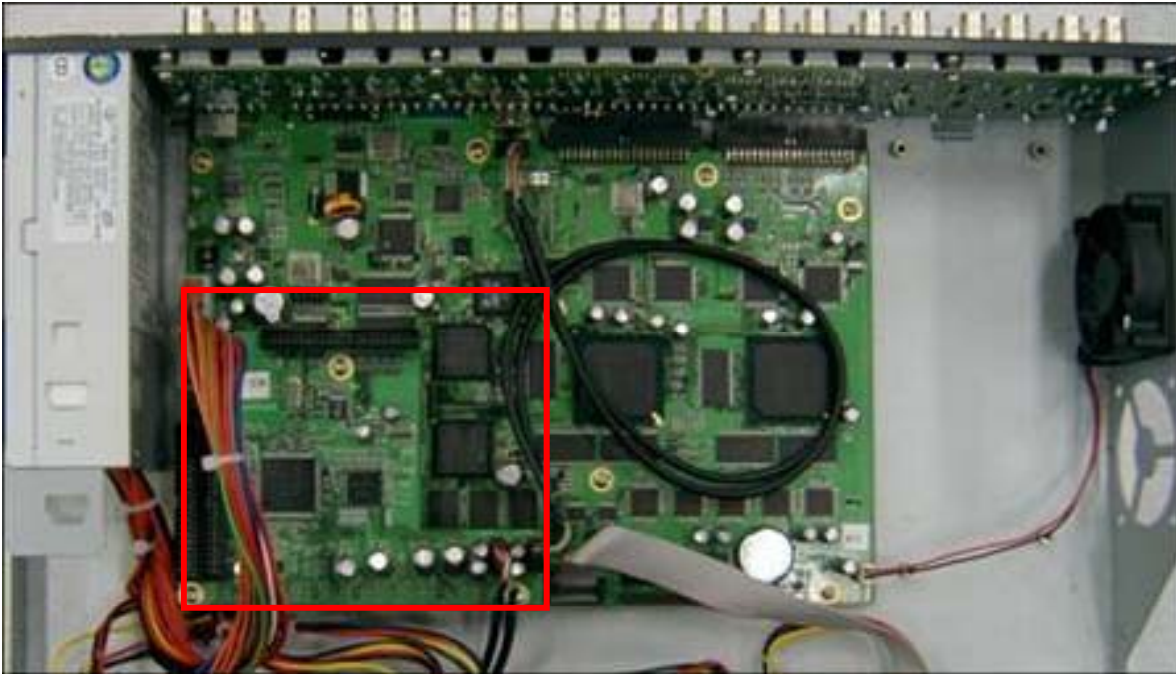
- When System Installation, Please Install under System Power Off Status.
- VGA monitor is main monitor. If you connect the CRT monitor with monitor out, you can not see the menu.

REMOTE CONTROLLER



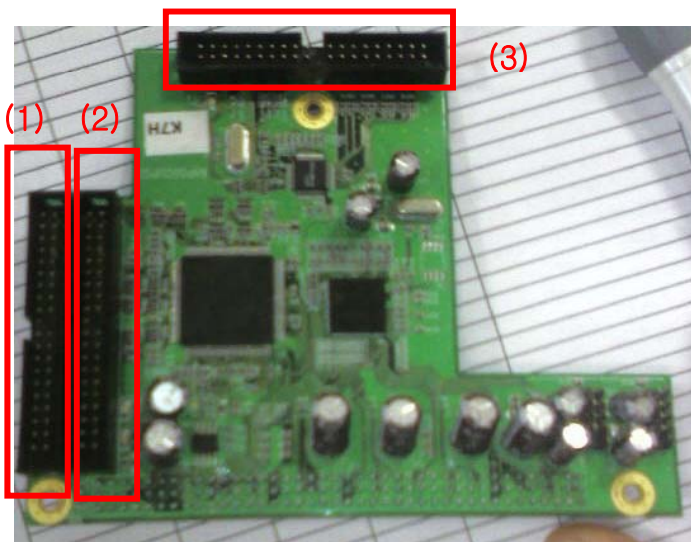
※ If there are many DVRs on stack, each DVR must be set different ID then Remote controller set each ID on DVR. Can control all DVRs on one Remote controller by each ID.

HDD, CD/DVD-RW CONNECTION



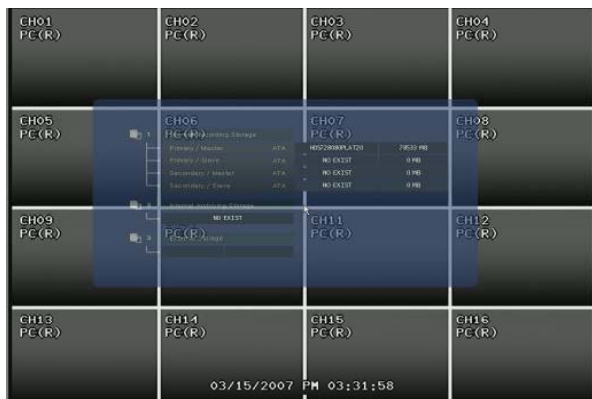
Above is mainboard picture after opening the top cover.

The connection board is in red box



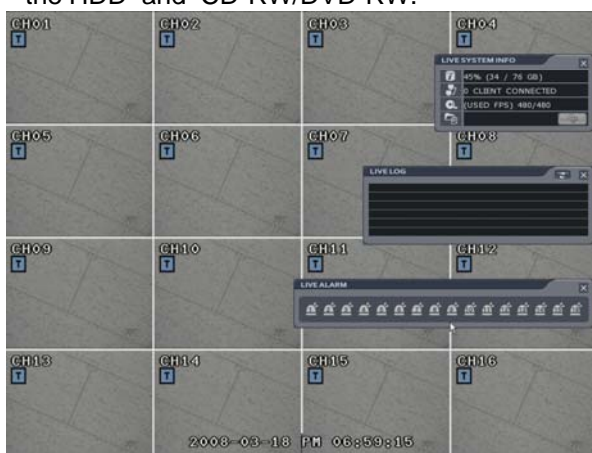
- (1) is the port for system disk(master disk) so you should install the first HDD at this port certainly.(HDD jumper location should be "Master"). If you connect the HDD at this port, HDD is not recognized.
- (2) is also the port to connect additional HDD.
- (3) is the port for CD-RW or DVD-RW only.

POWER ON



Press the power button.
The DVR startup screen detects and checks the HDD and CD-RW/DVD-RW.

After startup process is complete, it appear the "logon" display and input the Password.
(Default password is none. So click the "Logon" button.)

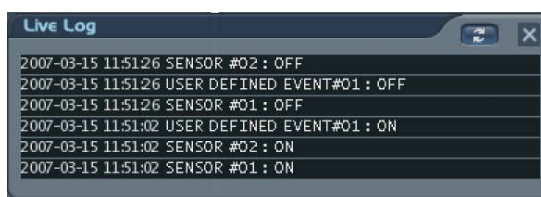



The DVR start the normal operation and show default display of all 16channels.
Three pop-up displays show current system information and live log and live alarm situation.

- C: Continuous Record
- M: Motion Record
- A: Alarm Record
- P: Panic Record



- Live System Info
 - 1) The percentage of HDD used.
 - 2) User Connection Information
 - 3) Current recording Frame information
 - 4) Backup situation



- Live log
It shows the live log.
 : Live log can be removed by pressing this button.

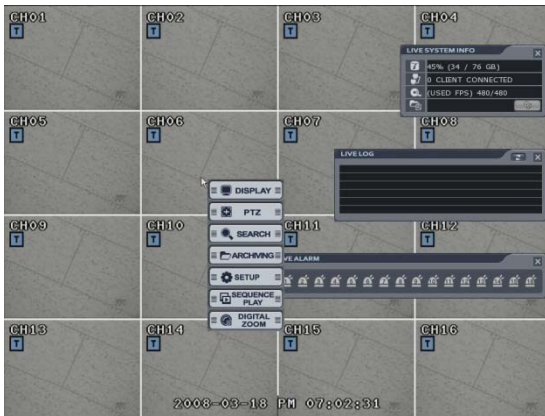


- Live Alarm
Alarm Detection channel show each channel.



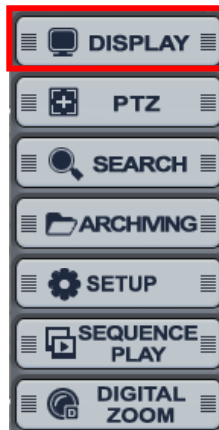
When operator drag the mouse at left side of bottom, this pop-up screen is appeared.
When pressing each button, the operator can Control (On/Off) above pop-up screen.

LIVE DISPLAY



Press the mouse right button from live display. It shows the menu screen.
 In case of pressing the “setup” button from front panel, it will enter “system setup menu of configuration” directly.

Configuring the Live Display



Click the right mouse button on the Live Display screen and Click the **DISPLAY** menu.

- Display Type The operator can select 5 different display type.
- Camera Arrangement The operator can edit the camera location each display type. After clicking the one of 16 channel buttons, select below section. Then display channel will be changed. Additionally the operator can select next display with clicking the arrow buttons.



Click the right mouse button on the Live Display screen and Click the **PTZ** menu.



- PTZ controls appear like above.
- 1) Select the camera.
- 2) Control the camera direction.
- 3) **Parameter** Press this button. The operator can control the PTZ detailed configuration with pop-up screen.
- 4) Control the Zoom, Focus, Iris.
- 5) Assign the Preset.
After moving the location, Select the number and press the "save" button.
Camera will move as assigned location when pressing the "Run" button after selecting the number".
- 6) Assign the Pattern.
After selecting the number, click the " Run" button.

Pattern Mode

- SEQUENCE PATTERN

Set preset position. [Move to any position by direction keys and click the [SET] button.

Select [SEQUENCE] in PATTERN MODE.

To make start position, click the [SET] button in PATTERN. ([SET] button is activated.)

Select preset Number in PRESET and click the [PLAY] button. (Have to select more than two preset)

ex) select preset No 1 and click the play button then select preset No 2 and click the play button.

To make stop position, click the [SET] button in PATTERN. ([SET] button is not activated.)

To run, click the [PLAY] button in PATTERN.

-CRUISE PATTERN

Select [CRUISE] in PATTREN MODE.

To make start position, click the [SET] button in PATTERN.([SET] button is activated.)

Click the direction key by manual.

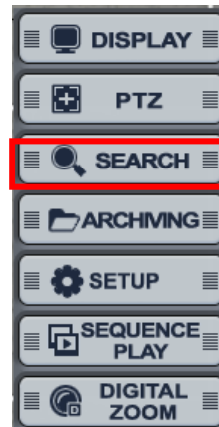
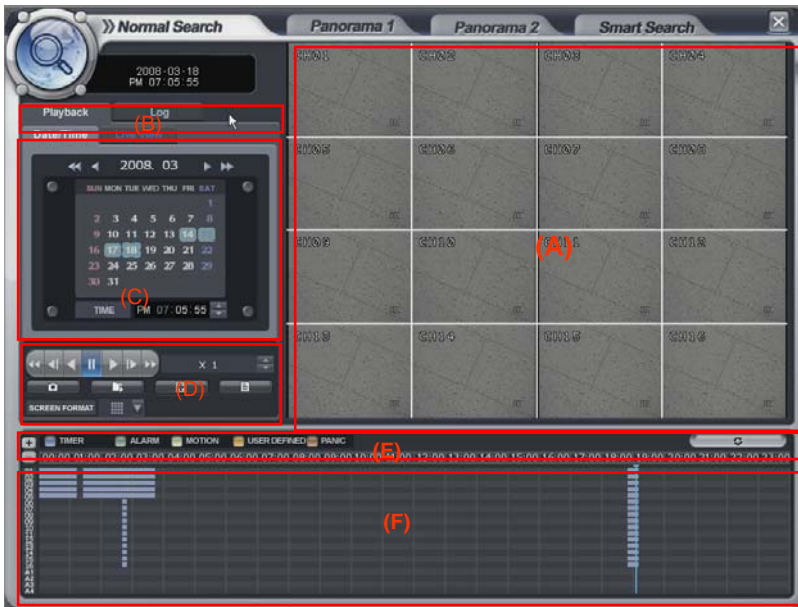
To make stop position, click the [SET] button again in PATTERN ([SET] button is not activated.).

To run, click the [PLAY] button in PATTERN.

SEARCH

The operator can search the recorded data as normal, panorama1, panorama2 and smart search

Normal Search



Click the right mouse button on the Live Display screen and Click the **SEARCH** menu.

Select the "SEARCH" icon and press the "SEARCH" button.

Logon display shows and input the password.

- (A) It shows the backup display.
- (B) Select the "Playback" or "Log"
- (C) Select the "Date and Time" for search
- (D) The window for search in detail.
- (E) It shows different color each recording configuration
- (F) It shows the recorded data .

• Playback-> Date/time

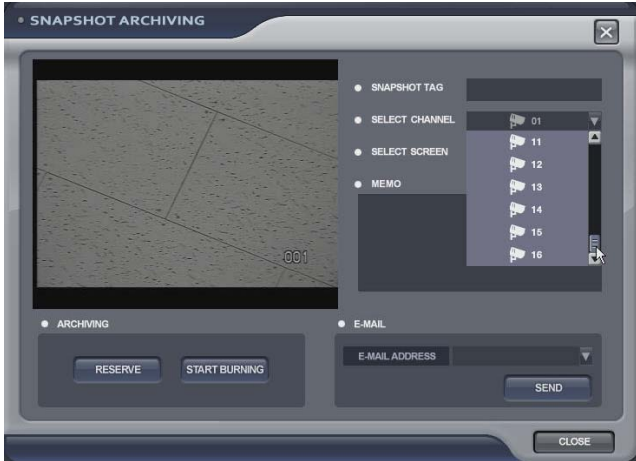


- Select the date. In case of date that have recorded data, it shows with color at (F).
- Select the time, The operator can select the time from timer or by drag the timeline barform (F).
- Click the button for playback from (D),
- Playback speed is from X1 to X128 forward and backward.

SEARCH



: Click the button for snapshot backup, Then it shows below screen.
During the playback, the operator can save the image that want to save.



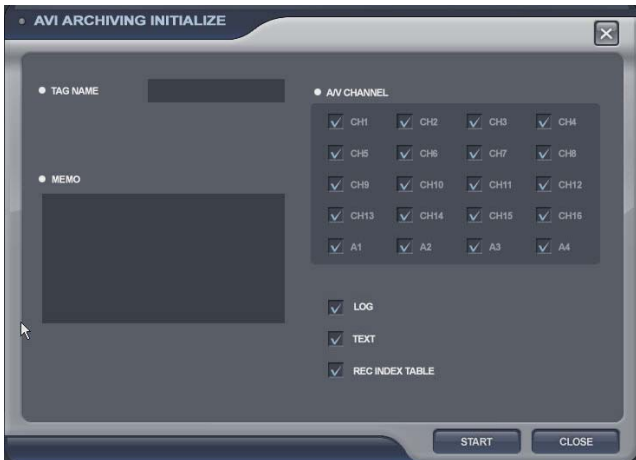
Input the snapshot tag.
Select the channel.
Select the screen.
Input the Memo.
For saving the image, click the “reserve” button.
(The operator can check the saved image from backup Date Management of backup menu).

START BURNING: snapshot image can be burned with USB device or CD/DVD-RW.

E-mail: snapshot image can be sent by E-mail.



: Click the button for AVI archiving. Then it shows below screen.
During the playback, the operator can save the AVI file about period that want to save.



Input the archiving tag.
Select the channel,
Select log, text, rec index table
Input the Memo.
Click the “start” button.
Then “AVI archiving” button color is changed as red.
(For using this function, it should work the playback certainly. If not, it can not save AVI file).
For stopping, click ”AVI archiving” button again.



Then it shows left screen.
For recording continuously, click the “continue” button.
If want to stop, click the “stop” button.

SEARCH



It shows left screen with backup data information. How to burning and reserve is same with how to save the snapshot. (The operator can check the saved image from backup Date Management of backup menu).



: Click the button for full screen from (D). Then it shows below screen.



For returning, drag the mouse to the bottom of screen. Then appear below icon with return icon. Click the "return" button then return original screen. The operator can control the playback speed with above icon from full screen playback mode.

SEARCH



: Click the button for viewing the log from (D).



Then it shows left screen. Current log is appeared.
For returning, click the same button again.

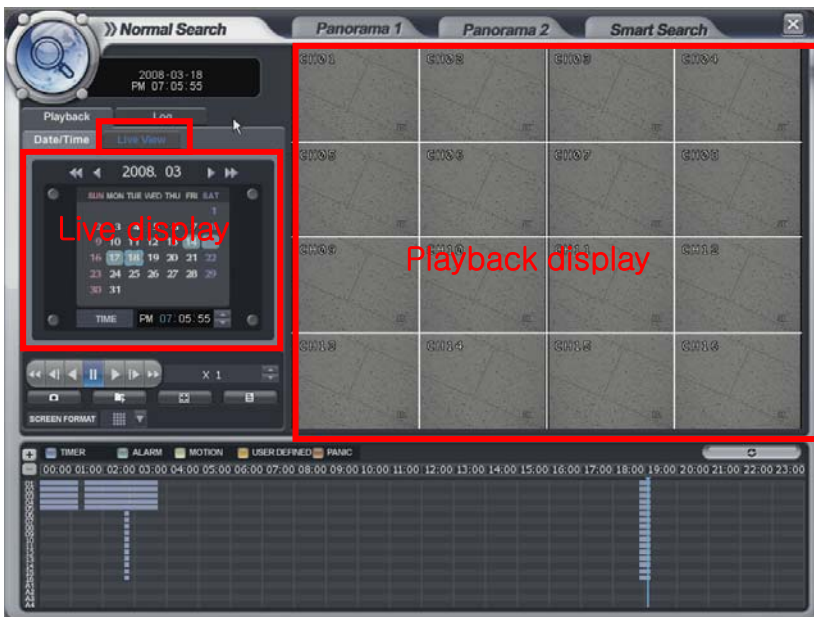
SCREEN FORMAT

: Click the button for changing the playback display from (D).
The operator can select the playback display mode.

TIMER ALARM MOTION USER EVENT PANIC

The display color about the recorded data at Timeline from (E) appear differently each type like above.

- Playback -> Live View



Select the "live view".
Then it shows current live display instead of calendar.
The function with below icon work equally.
You can see the live display and playback display at the same time.

SEARCH

- Playback→ Log



Click the “log”.

Then it shows left screen.

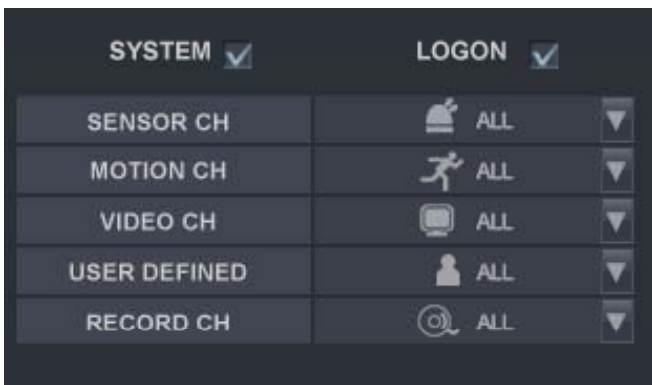
Select the date that want to see the log from calendar.

Select the event section that want to see.



Click to start the “search”.

Click the button with viewing with timeline.



The option that want to search each channel can be selected.

Select the log.

For playing the recording data with log, click the log double.

Click same button again for returning original screen.



Page Down, Page Up, The oldest log, The latest log as order.

SEARCH

Panorama1 Search

- The operator can search frame by frame.

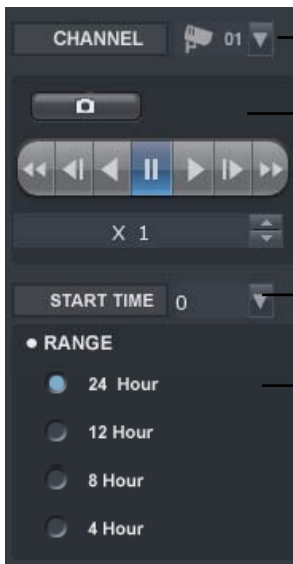
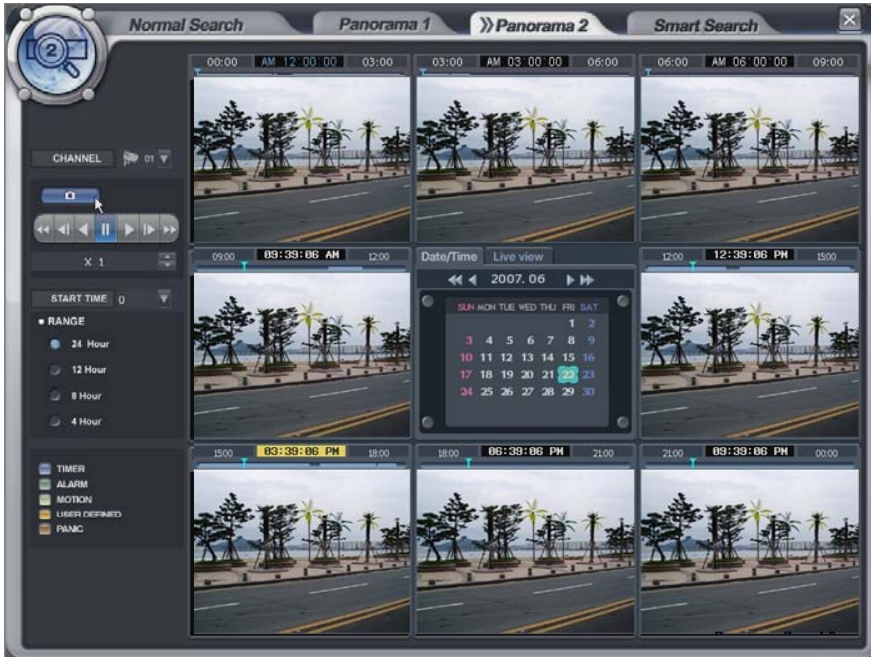


- Select the channel.
- Select the date.
- Select the time.
- The operator can select the time from timer or by drag the timeline bar.
- How to search is almost same with normal search.

SEARCH

Panorama2 Search

- The operator can search with divided screens each time range.



- Channel selection
- Snapshot backup
- Start time selection
- Time total Range selection

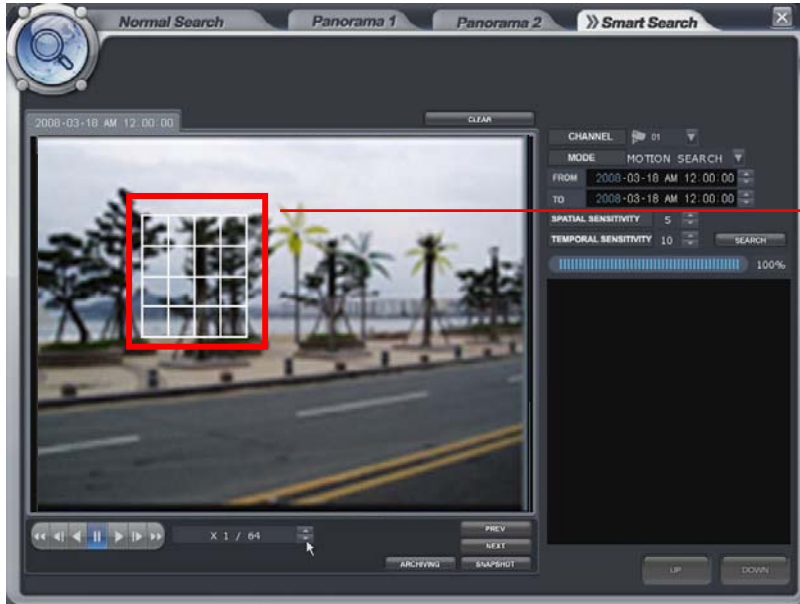


→ The operator can select the playback location by Drag and drop Timeline bar.

- Select the channel.
- Select the date.
- How to search is almost same with normal search.

SEARCH

Smart Search



-The operator can search by Museum search or Motion search.

- Select the camera.

- Select the area that want to search by mouse drag.

- Select the search method.(Museum and Motion)

- Museum search

This search indicates or generates event(consistent/inconsistency) when search is compare with the starting image and the image continuous to occur more than Designated Time on the Designated Accuracy of the Selected Area.

For example, assumpt that a certain object got lost on the museum. Then search the point from before it got lost to, when the object was located(select area β). Thus, the huge change (accuracy of designated β) could be grasped.

-Motion search

It is a search method to indicate or generate event when the motion occurs more than Designated Time on the Designated Accuracy of the Selected Area.

For example, to detect the motion of appropriate location(select area β) of the image. Set the accuracy and interval(designated time β), to detect the event. Next start search for the event to occur according to the assigned time interval when there is motion.

- Select the time.(From and To).

- Select the sensitivity and check interval(sec).

- Prev. button: Playback the image of previous log by based on current time.

- Next. Button: Playback the image of next log by based on current time.

ARCHIVING

Archiving



Click the right mouse button on the Live Display screen and Click the **ARCHIVING** menu.

- Select the “Archiving” icon and press the “Archiving” button.
- Logon display shows and input the password. It shows the backup display.
- Input the “TAG NAME” and check if want to backup the “LOG, TEXT and REC INDEX TABLE” information.
- Select the Start time and End time with timer or timeline bar.
- Click the “query” button. Then it shows data information at “BACKUP INFO.”.



: Click the button for saving the data after inputting the backup tag.

(The operator can see the saved data from backup Data Management.)



: Click the button for burning the data.



Then it shows “burn” screen. Select the device(CD/DVD,USB)

Foreground : During backup, the operator can not control the other function.

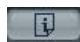
Background: During backup, the operator can control the other function.


ARCHIVING


Archived Data Management



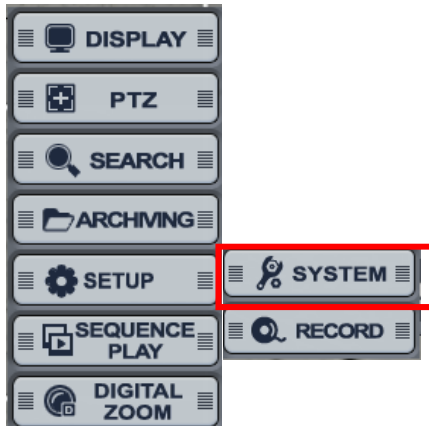
- The operator can see the saved snapshot image and AVI file form Backup menu and search menu.

 : Detailed information

 : Delete

 : Burning

SETUP - SYSTEM



Click the right mouse button on the Live Display screen and Click the **SETUP** menu and Click the **“SYSTEM”**.

Camera -> Title




• Camera Title: Input the Title and description by virtual keyboard.

SETUP - SYSTEM

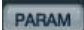
Camera -> Color



- Camera color setup: Select the Brightness, Contrast, Tint, Color. The operator can control the color with live display when clicking the  button.

Camera -> PTZ



- Select the address, protocol and Baud rate each camera. The operator can control PTZ detailed setup when clicking the  button.

SETUP - SYSTEM


Camera -> OSD



- Select the covert each channel and main display, spot OSD setup.

※ How to use the virtual keyboard



Click Mouse left button double from the location that operator want to input.
Then it shows the virtual keyboard. Select each character from virtual keyboard.
For using the small character. Click the  button.

SETUP - SYSTEM

Alarm/Event -> Sensor



Select the Activation, Normal State (High/Low-It is related with sensor type) and input the description.

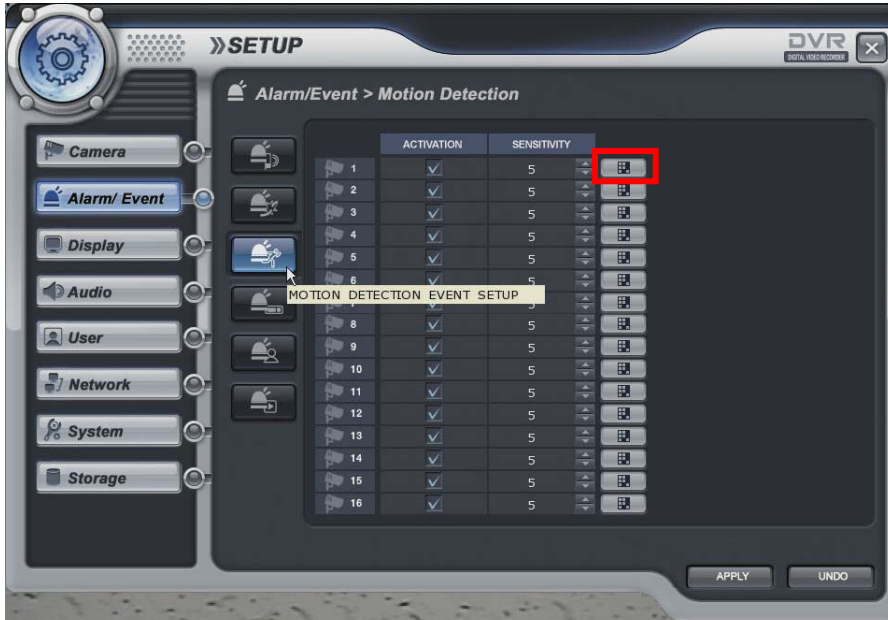
Alarm/Event -> Video Loss



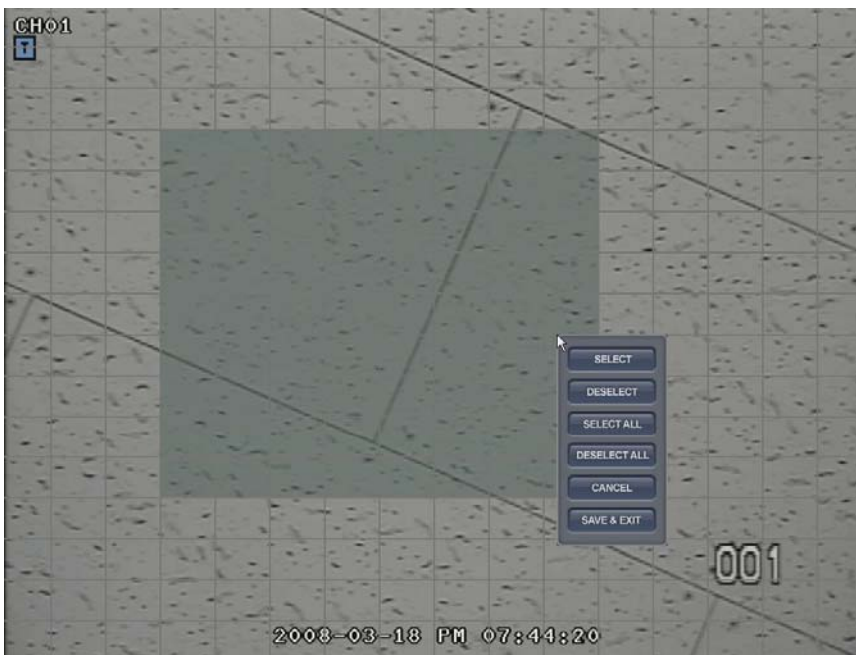
Select the video loss Activation.

SETUP - SYSTEM

Alarm/Event -> Motion Detection



Select the Motion Detection Activation, Sensitivity(1~10) and Motion Area.



The operator can select the motion area from above screen after clicking the [Icon] button. After selecting the motion area with mouse drag, click the mouse right button, Then it shows pop-up menu that related with selection.

SETUP - SYSTEM

Alarm/Event -> Storage



- File system Event
 - Disk Full When disk full, Activation On/Off.
- Smart Event
 - Smart Warning When HDD has trouble, Activation On/Off.
 - Smart Check Period Select from 1 hour to 24 hour.

SETUP - SYSTEM

Alarm/Event -> User Defined



The operator can make the User Defined Event with current event's mixing. When happen the over two events at the same time, the operator can setup how it work. (Mixing condition is "AND" not "OR")

Select the Activation each channel.

Setup the detail configuration after entering the "EDITOR" with clicking the  button or double click the selected channel.

Select the sensor, motion, Videoloss, Storage Event and User defined Event as user want. After selecting it, action type can setup from Event Action Setup.



SETUP - SYSTEM

Alarm/Event -> Event Action -> Digital Out




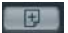
- Linked Event: Select the event that want to assign the action. (Alarm, Motion, Videoloss and User defined)
- Select the Activation on/off.
- Normal state: Select the operation type. (High / Low)
- Dwell Type: use/ Not use
Time: 5- 300 second and until pressing the any key.

Alarm/Event -> Event Action -> E-mail Notification



- When happen the selected event, it notify the event with E-mail..
- Select the Activation on/off.
- Select the Sensor, Videoloss, Motion, Storage(Smart alarm, HDD full) and user defined event).
- Input the memo.

 ADD button: Please add the User that want to get the E-mail notification.

 DELETE button: Delete the User that already registered.

SETUP - SYSTEM

Alarm/Event -> Event Action -> Remote Client Notification





- When happen the selected event, it notify the event to Remote client.
- Select the Activation on/off.
- Select the Sensor, Videoloss, Motion, Storage(Smart alarm, HDD full) and user defined event).
- Input the memo.

Alarm/Event -> Event Action -> Video Popup



- When happen the selected event, screen pop-up at the selected monitor.
- After selecting the event (Alarm, motion, User Defined Event) that want to pop-up, select the activation on/off.
- Assign the channel that want to pop-up each Monitor.
After selecting the channel that want to assign, click the mouse right button. Then channel will be pop-up.
- Assign the pop-up dwell time.

 ADD button: Please add the item that want to be pop-up.

 DELETE button: Delete the item that already registered.

SETUP - SYSTEM

Alarm/Event -> Event Action -> Buzzer



- When happen the selected event, select buzzer on/off.
- After selecting the event (Alarm, motion, Videoloss, User Defined Event) that want to buzzer, select the activation on/off.
- Dwell Type: use/ Not use
Time: 5- 300 second and until pressing the any key.

SETUP - SYSTEM


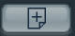

Display -> Screen Template

Setup the display configuration. When operator want to see live display with sequence mode, it is used.

This menu should be setup before setup the Main Display Sequence.



The operator can select the screen mode with 1,4,8,9,16 division with clicking above icon.

-  ADD button: Please add the item that want to be pop-up.
-  DELETE button: Delete the item that already registered.
-  EDIT button: Edit after selecting current screen template



- When clicking the ADD or EDIT button, it show the above screen.
- Select the channel.
- Select the location of channel that want to change.
- Then screen template is made or changed.
- The operator can make new screen template or modify the current screen template

SETUP - SYSTEM

Display -> Main Display Sequence

- Main Display Sequence When start the sequence, the operator select and make the working sequence type.



- Press the ADD button.
- Select the new list (It show blue square)
- Input the name with virtual keyboard and select the dwell time(5-100 sec).
- Click mouse right button.
- Then it show screen template list each division.
- Select the screen template that want to do the sequence.
- The operator can add Max.16EA screen template as same method.
- When pressing the DELETE button after selecting the list, list is deleted.
- In case of add the current setup, it can be changed after selecting each template of current sequence.

* The Max. list Number is 16EA.

The screen template that can be selected is related with screen template setup of front page.

SETUP - SYSTEM

Display -> Spot#1-4 Display Sequence

In case of advance spot, setup method is almost same with main display sequence. The different thing is only one.



The screen template that can select is only two types.(1,4 division)

- Press the ADD button.
- Select the new list (It show blue square)
- Input the name with virtual keyboard and select the dwell time(5-100 sec).
- Click mouse right button.
- Then it show screen template list each division.
- Select the screen template that want to do the sequence.
- The operator can add Max.16EA screen template as same method.
- When pressing the DELETE button after selecting the list, list is deleted.
- In case of add the current setup, it can be changed after selecting each template of current sequence.

* The Max. list Number is 16EA each spot channel.

How to play and stop the sequence.

After clicking mouse right button from live display, select the "SEQUENCE PLAY" or "SEQUENCE STOP"
Additionally, press the "SEQ" button from DVR.

SETUP - SYSTEM

Audio

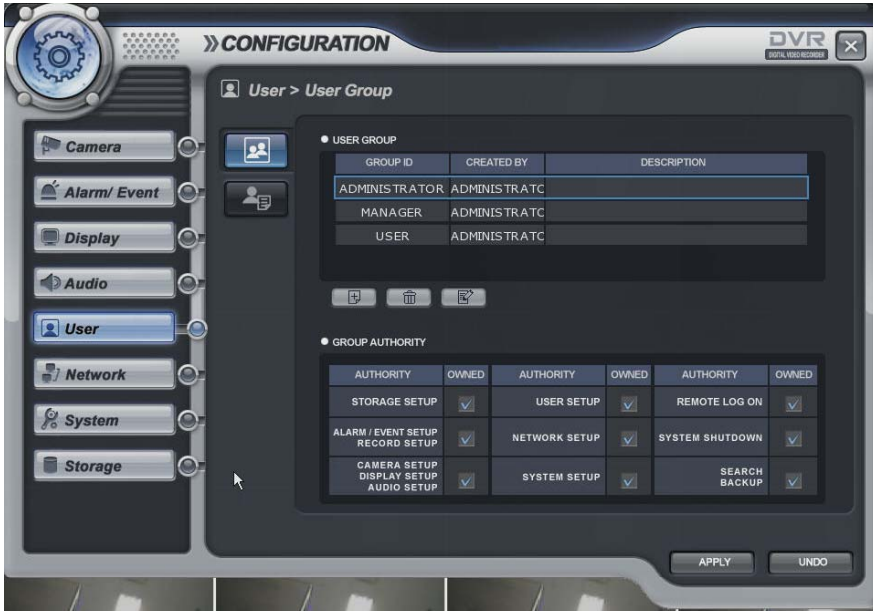
- Setup the audio configuration.



- Live Audio: Select the Live audio channel.
- Network Audio: Select the audio transmitter and receiver.
- Buzzer ; when pressing the key of front board and Remote controller. Sound on/ off.

SETUP - SYSTEM

User -> User group

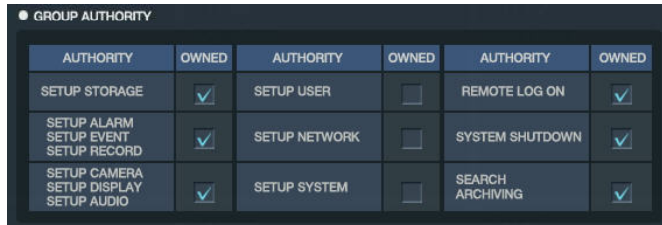


Default user group (administrator, manager, user) can not be delete or edit.

After selecting "ADD" button, the operator can make the new user group with new authority.

When selecting "ADD" button, it show "add group" screen.




It shows the virtual keyboard when click mouse left button double for inputting the text.



After inputting the new group ID and description, click the "ok".

Then select the User group ID.(It shows blue square).

Select the group authority and click "Apply" icon.

-  ADD button: Please add new group.
-  DELETE button: Delete user group.
-  EDIT button: Edit user group.

SETUP - SYSTEM

User -> User



The operator can add, delete or edit the new user.

When selecting the "ADD" button, it shows "add user" screen.

After inputting the ID, PW and E-mail by virtual keyboard, click the "OK".

SETUP - SYSTEM

Network -> Configuration



DHCP: In case of "Dynamic IP", select the "DHCP"

When clicking the "apply" button, DVR get the IP address automatically after selecting the "DHCP".

In case of using the "Static IP", input the IP address and other information manually.

DDNS (Dynamic DNS): This is used with a Dynamic IP address, which may be changed by the ISP at any time.

✳ **With DDNS, there is no need to enter the IP address on every connection, A name server address is used instead of.**

- Setup DHCP to on or manually input the unit IP address.
- Setup DDNS to On, set the DDNS properties (user name, password, and domain name) and reboot the system.
- To access the DVR using the name server address, the format for the address is : http:// [user name].[domain] ([Example: http:// mydvr.dyndns.org] (user name: mydvr.domain: dyndns.org)
- User will need to input all of the correct DDNS information into the Network setup in order for the DVR to be able to update its new IP address to the DDNS server whenever a change occurs.
- If user is using a router in your network configuration, it is the router which must be setup for DDNS, not the DVR.

WEB SERVICE: If do not check this, user can not connect on Internet Explore.

NET CLIENT SERVICE: If do not check this, user can not connect on the Remote software.

IP, GATEWAY, SUBNET MASK and DNS SERVER: Input the each value.

DDNS Server: Input DDNS server domain name.

Net Client Port: Input net client Service Port # (Default:6400).

Web Service Port: Input the Web server port # (Default: 8080).

Max TX Speed: Setup Max Network TX Speed. (56k – 8192k).

♣ After making changes to the Network setup, click Apply. (The system will prompt you to reboot in order to save change.)

SETUP - SYSTEM

Network -> E-Mail Server



USER Account : Enter a username to identify the DVR in email messages.

PASSWORD : If SECURITY is set to ON, enter the password here.

SMTP SERVER : The SMTP outbound email server that should be used to send email notifications.

SMTP SERVER PORT : The outbound email port number.

SETUP - SYSTEM

System -> Information



Information

- Site Description: Input the name by virtual keyboard
- H/W version: DVR's H/W version
- S/W version: DVR's FW version
- Mac address; DVR's Mac address

Controller connecting

- Setup to control by the keyboard controller.
- Select the System ID, Protocol and Baud rate.

System -> Date/Time



- Date&Time: Current DVR's Date and Time. The operator can edit manually.
- Timezone: Select the Timezone.
- Date and Time format: The operator can change the Date and Time format.
- Network Time server: Input the network time server's domain name for getting the time automatically.
Auto update and Time: DVR can get the time information automatically with assigned time duration in case of connecting with network.
- The default setup of D.S.T is on.

SETUP - SYSTEM

System -> Update



- Firmware Upgrade

The operator can update the F/W by USB device and CD.
After inserting the F/W at USB and CD, connect it at the DVR.
Select the F/W upgrade button then it shows the above screen.
After selecting the F/W from list, select the "upgrade" button.
When finishing the upgrade, DVR is re-boot automatically.

- Factory Default : System will be initialized.

- System Configuration

Save: Current configuration will be saved in USB and other device.
Load: The configuration that saved from other DVR will be loaded in current DVR.

- Select Language

The operator can select the language.
Language may different each system option.

SETUP - SYSTEM

Storage -> Operation



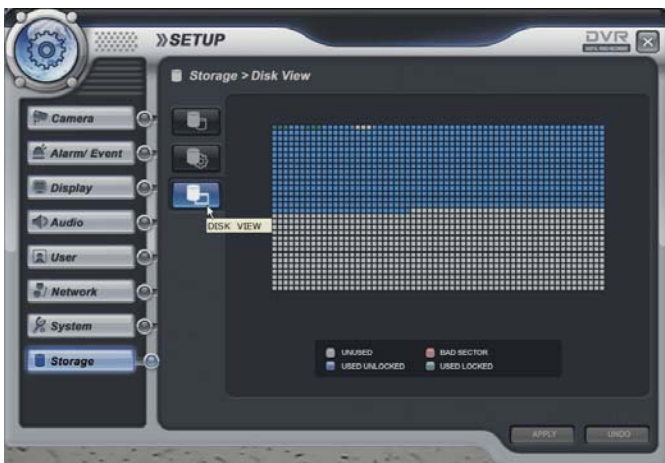
- Operation mode: Select the overwrite /write once (no overwrite)
- Internal recording: It shows the internal HDD recording information that installed
- CD/DVD Media: It shows the internal CD-RW/DVD-RW that installed.

Storage -> Utility



- Format
When clicking the "START" button, all data is formatted.
- Check Disk
When clicking the "START" button, it check the bad sector of HDD.

Storage -> Disk View



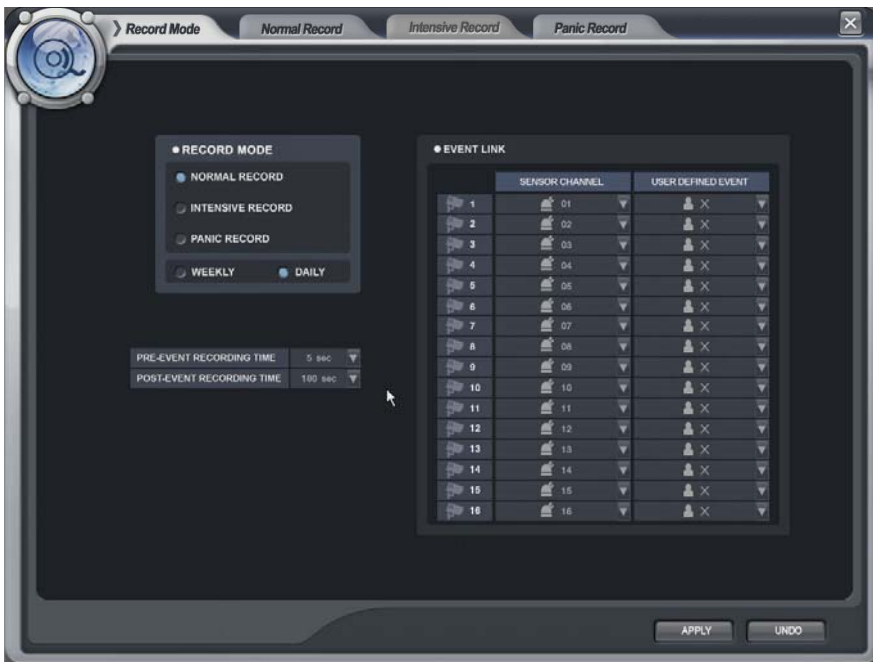
- It shows current HDD's information.

SETUP - RECORD



Click the right mouse button on the Live Display screen and Click the **CONFIGURATION** menu and Click the **“RECORD”**.

Record Mode





SETUP - RECORD

- Record Mode

In case of selecting the “Normal Record” from record mode, The operator can not enter “Intensive Record” setup.

Oppositely in case of selecting the “Intensive Record”, The operator can not enter “Normal Record” setup.

- Weekly/Daily

The operator can select the ‘Weekly” and “Daily” record setup from ‘Normal Record” and ‘Intensive Record” setup.

So the DVR will record as daily and weekly setup configuration of “Normal and Intensive record” setup mode.

-Pre-Event Recording Time: When the DVR is not in continuous recording mode, this setting determines the amount of footage that is always recorded before an event occurs. (motion detection, alarm input etc.)

- Post- Event Recording Time : When the DVR is not in continuous recording mode, this setting determines the amount of footage that is always recorded after an event occurs. (motion detection, alarm input etc.)

- Event Link: Select the sensor channel and user defined event each channel.

SETUP - RECORD

Normal Record

Parameter



-Drag the time that want to setup by mouse.
In case of setup differently each time, the color is different.

In case of recording setup, the operator should setup as 4 divided parts.

The operator can setup Max.CIF,120FPS each divided part.

- Select the Resolution.
- Select the Frame Rate
- Select the Quality. (low, standard, high, highest)
- The operator can setup other divided part as same method.
- In case of Audio setup, it is assigned at Nr.1,2,3,4 Channel basically.
(It can not be changed)

In case of weekly, it is almost same with daily setup. It can setup each date.

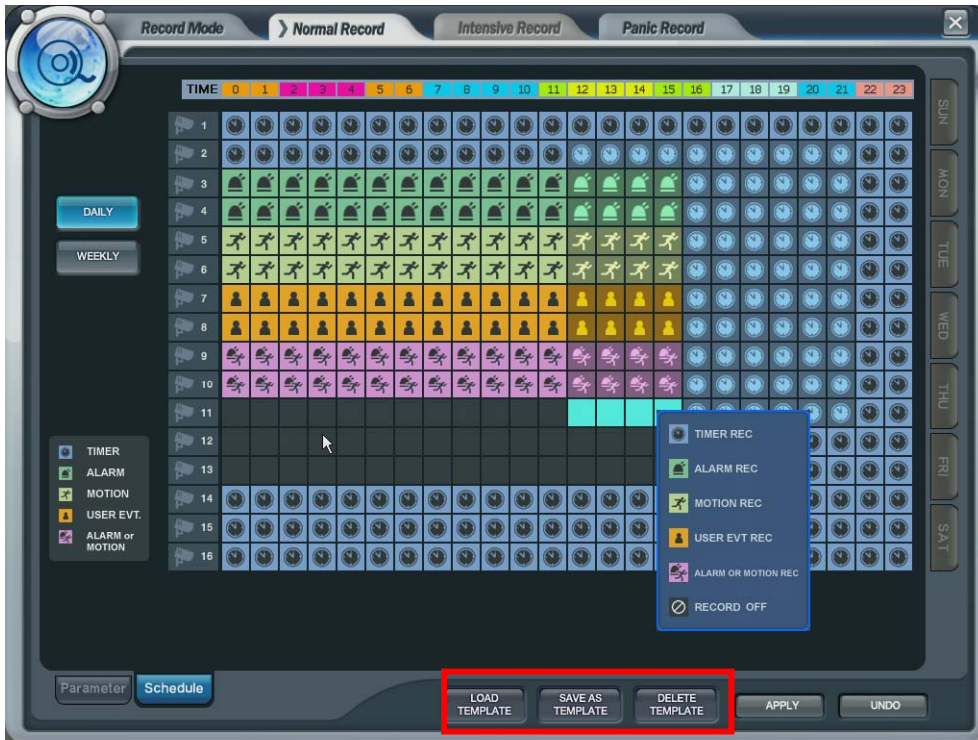
SETUP - RECORD

Schedule

The operator can select recording type (Timer, Motion, Alarm, User Defined, Alarm or Motion and Record off) each time, channel.

Drag the section that want to select and then click the mouse right button.

Then recording option will be appeared. The operator can select the recording option each time and channel.



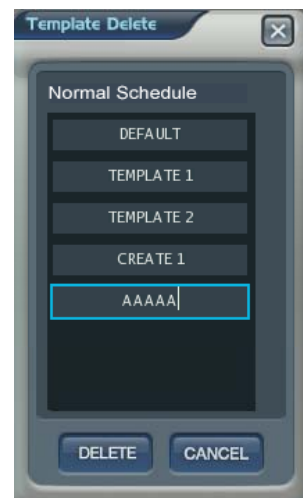
- Recording setup Save, Load and Delete

The operator can make the various recording setup in DVR. That include the all setup from Parameter and Schedule.

Load Template: Load the recording setup that already made.

Save as Template: Save the current recording setup.

Delete Template: Delete the recording setup from list.



SETUP - RECORD

Intensive Record

In case of this record, record will be centralized at channel that event is happened as event priority.

Parameter



-Drag the time that want to setup by mouse.
In case of setup differently each time, the color is different.

The setup is same with normal recording setup.

It record as setup under normal condition. But when happening the event on channel, the Recording setup of the channel that event is happened will be changed as D1, 30 FPS automatically.

If happening the event from some channels at the same time, it will share the max. Recording rate properly.

In case of recording setup, the operator should setup as 4 divided parts.

The operator can setup Max.CIF, 120FPS each divided part.

- Select the Resolution.
- Select the Frame Rate
- Select the Quality. (low, standard, high, highest)
- The operator can setup other divided part as same method.
- In case of Audio setup, it is assigned at Nr.1,2,3,4 Channel basically.
(It can not be changed)
- Select the Intensive recording condition with Alarm, Motion and User defined event.
- In case of weekly, it is almost same with daily setup. It can setup each date.

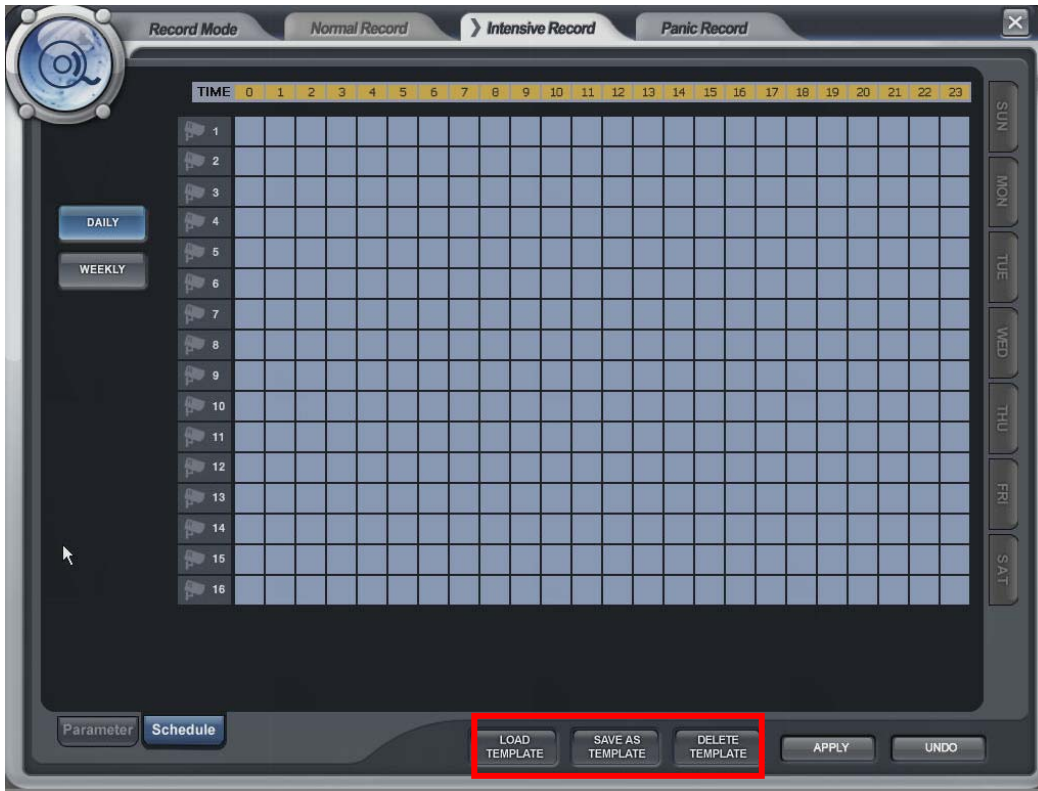
SETUP - RECORD

Schedule

The operator can select the record on/ off each time, channel.

Drag the section that want to select and then click the mouse right button.

Then recording option will be appeared. The operator can select the recording on/off each time and channel.



- Recording setup Save, Load and Delete

The operator can make the various recording setup in DVR. That include the all setup from Parameter and Schedule.

Load Template: Load the recording setup that already made.

Save as Template: Save the current recording setup.

Delete Template: Delete the recording setup from list.



SETUP - RECORD

Panic Record

When pressing the panic button or detecting the panic alarm, recording condition is changed as panic record setup.



In case of recording setup, the operator should setup as 4 divided parts.

The default setup is CIF, 30FPS.

Setup method is same with normal record setup.

The operator can setup Max.CIF,120FPS each divided part.

- Select the Resolution.
 - Select the Frame Rate
 - Select the Quality. (low, standard, high, highest)
 - The operator can setup other divided part as same method.
 - In case of Audio setup, it is assigned at Nr.1,2,3,4 Channel basically.
(It can not be changed)
- Recording setup Save, Load and Delete

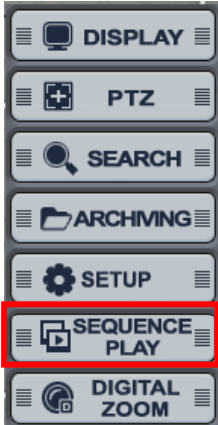
The operator can make the various recording setup in DVR. That include the all setup from Parameter and Schedule.

Load Template: Load the recording setup that already made.

Save as Template: Save the current recording setup.

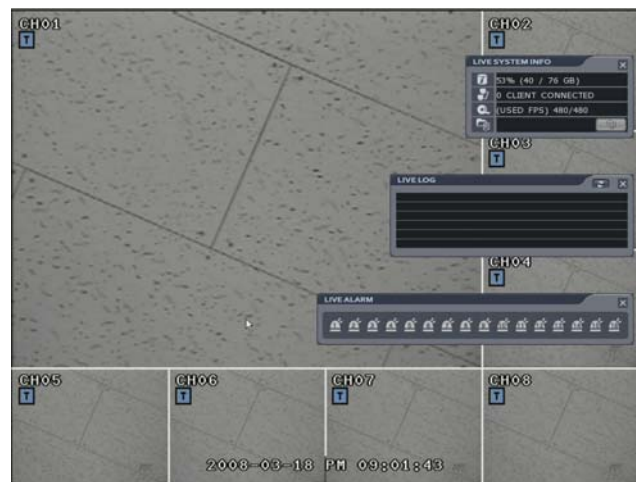
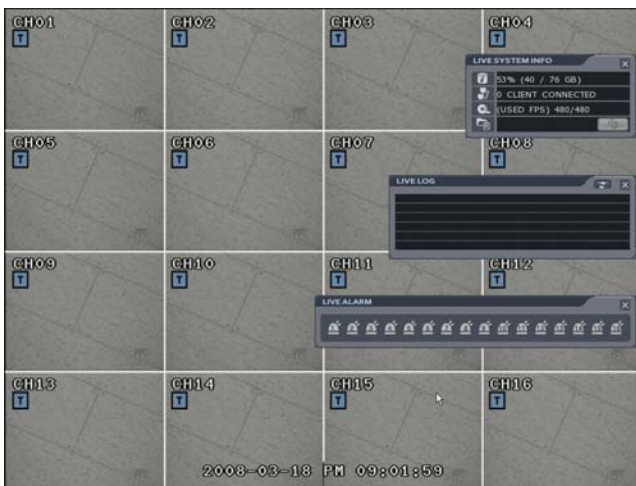
Delete Template: Delete the recording setup from list.

SEQUENCE

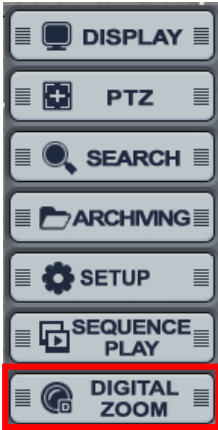


Click the right mouse button on the Live Display screen and Click the **“SEQUENCE PLAY”** and **“SEQUENCE STOP”**.

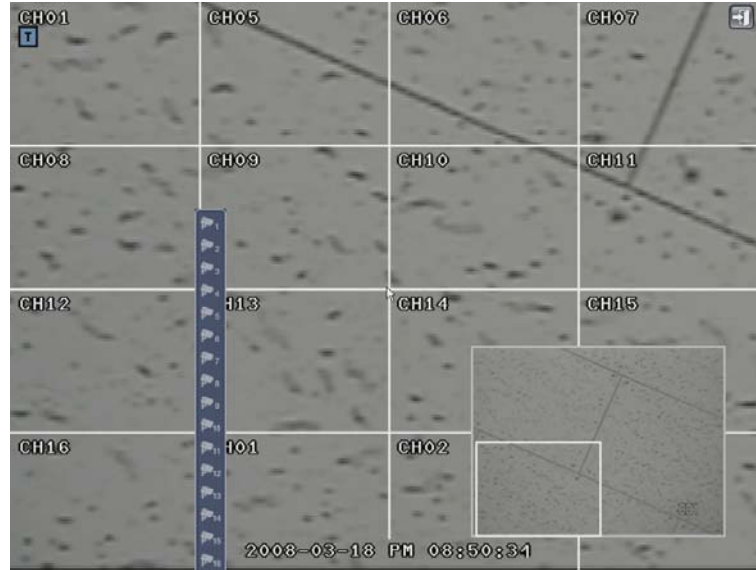
- Select the “SEQUENCE PLAY” icon and press the “SEQ” button. Then it shows installed sequence display. (Sequence Play/Stop). It is related with “Display -> Main Display Sequence”. Please setup the Main Display Sequence firstly.




DIGITAL ZOOM



Click the right mouse button on the Live Display screen and Click the **“DIGITAL ZOOM”**.



Click  button for returning to live display.

Click the mouse right button for changing the channel. Then it shows the channel list.

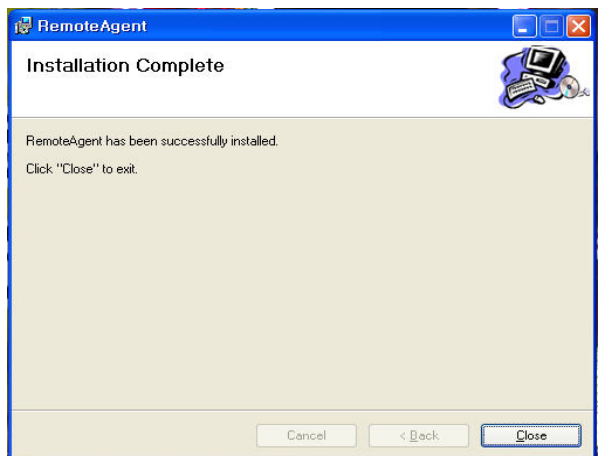
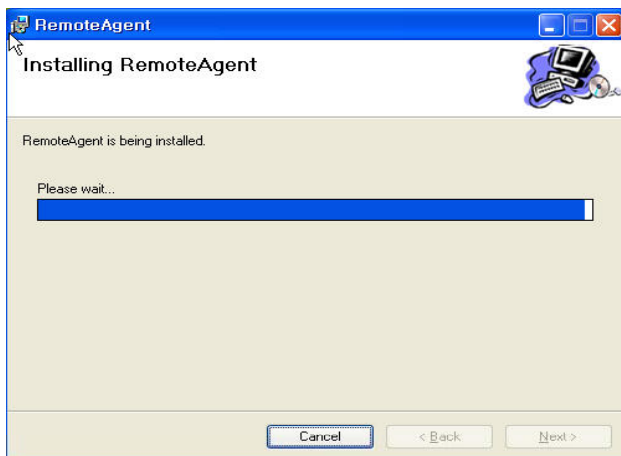
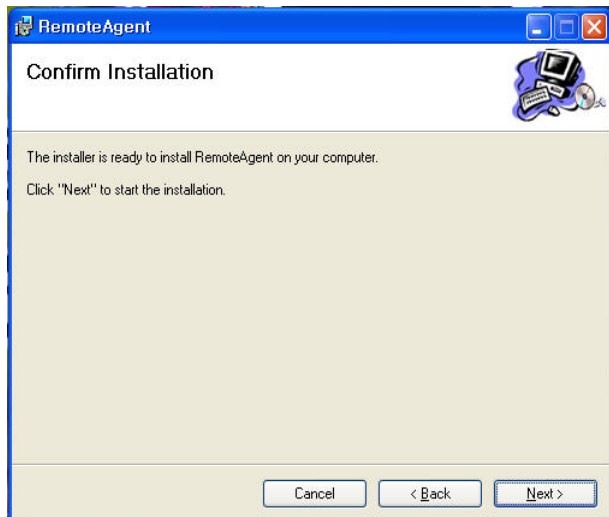
Select the channel that want to change.

Location can be controlled by Mouse drag and Zoom in/out can be controlled by Mouse wheel.

REMOTE SW INSTALLATION

System Requirement

- ① Main Board (CPU): Pentium-500(Minimum), Pentium 4 recommend
- ② OS: Higher than Windows 2000, DirectX 7.0A
- ③ Memory (RAM): More than 128 M
- ④ VGA: Graphic card that support the DIRECT-X ※ IMM4 Codec (When Playback Backup File)



- ① Open CD-ROM Drive and Run the RemoteSW' package. then Appear Setup Menu.
- ② Close All Running Software and Press Next to Move Next Step.
- ③ Showing Progress of Copy of Files.
- ④ Finish DvrRemoteAgent Program Installation.

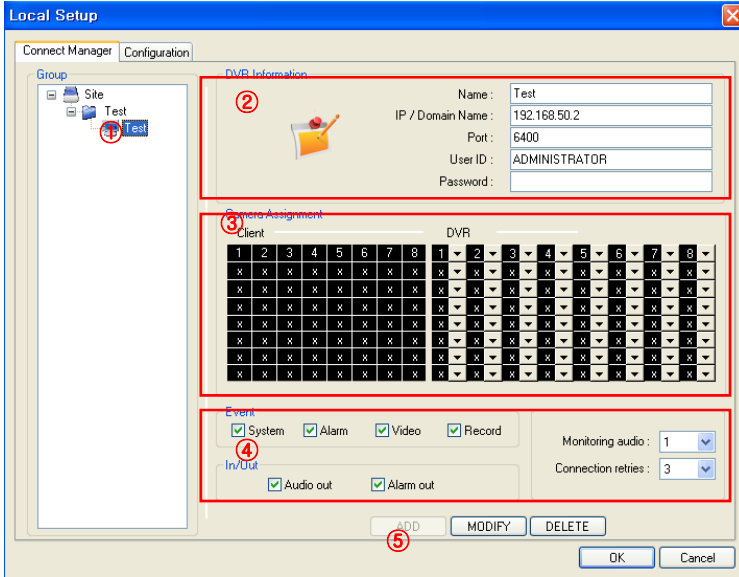
REMOTE SW INSTALLATION

Introduction



- ① Main Display : Shows single or multi-channel view of cameras connected to the DVR.
- ② Camera Selection Buttons : Indicates Camera #; click button to display a selected camera.
- ③ Minimize / Exit : Minimize DVR Client Window (to taskbar) or Exit Remote Agent.
- ④ Date/Time Display : Shows current DVR System Date/Time
- ⑤ SEARCH : Enter Search Mode to Search and Playback Recorded Video
 SETUP : Set up properties of Remote Agent, including the list of DVR units to connect to.
 CONFIG : Allows Remote Configuration of a connected DVR unit.
- ⑥ DVR Selection : Choose a DVR to connect to with the Remote Agent.
- ⑦ Connect : Connect to selected DVR.
 Disconnect : Disconnect from selected DVR.
- ⑧ Screen Division Selection : Change Screen Division Mode (1/4/9/16/36,64 view, sequence, full screen)
 Sequence/Manual Switch/Full screen
- ⑨ Begin Saving to AVI file : Begin Saving Live or Playback Images to the local PC in AVI format.
- ⑩ Event Log Viewer : Display Current Event Log & Jump to Event for Playback.
- ⑪ PTZ Control Button : Control Camera Pan, Tilt, Zoom, & Focus (for supported PTZ devices only)
- ⑫ Audio Button and Alarm : Control Bi-Directional Audio, Mute, and Toggle Alarm (On/Off).
- ⑬ Quit : Exit Remote Agent.
- ⑭ Connection Status: Indicates the Network Status of a connected DVR.

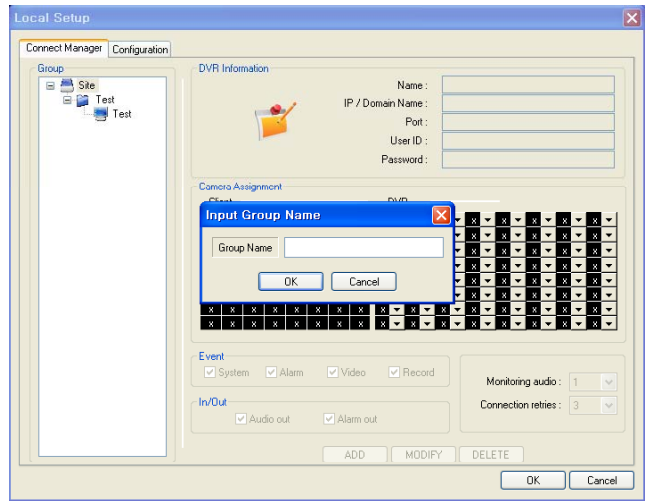
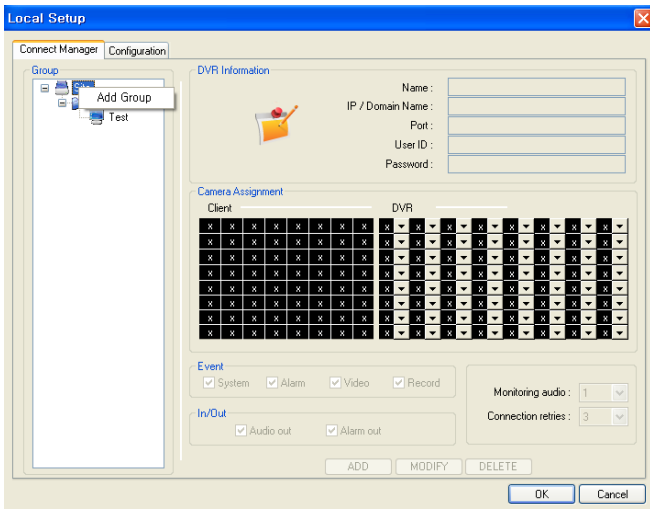
REMOTE SW LOCAL SETUP



Local Setup

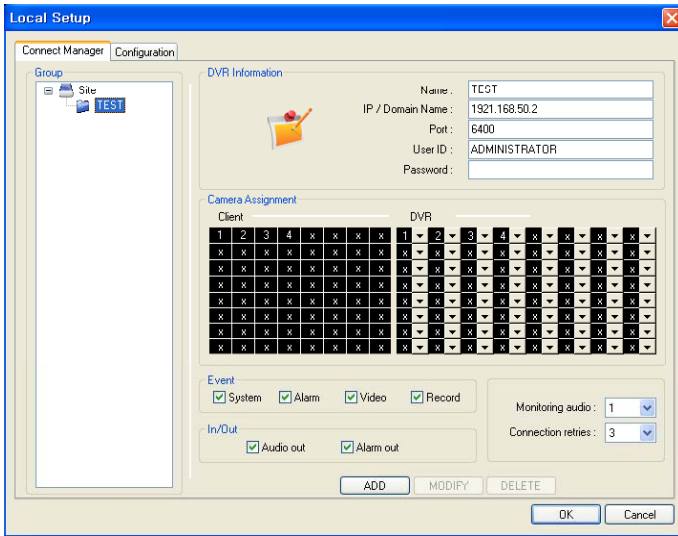
- ① Group & DVR list.
- ② DVR Information.
- ③ Camera Assign : Setup camera.
- ④ Option Check.(Event-system, alarm, video, record & In/Out)
- ⑤ Add, modify, delete group.

Add Group

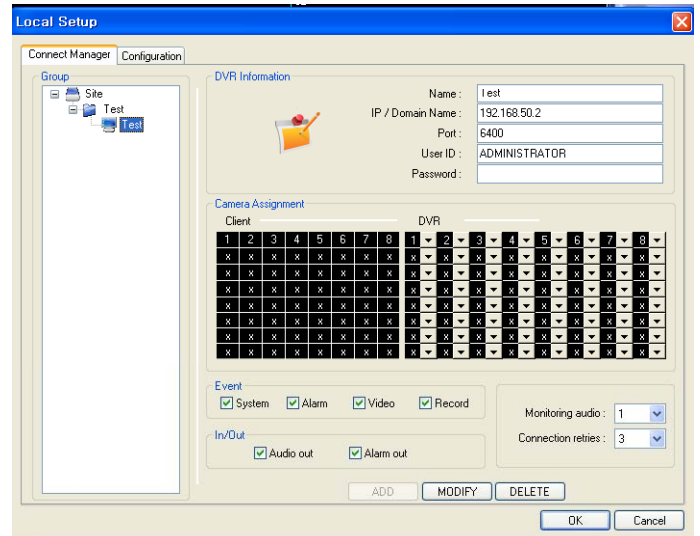


- ① At 'site' of left upper side, right click the "Add Group".
- ② Input the Group name.

REMOTE SW LOCAL SETUP



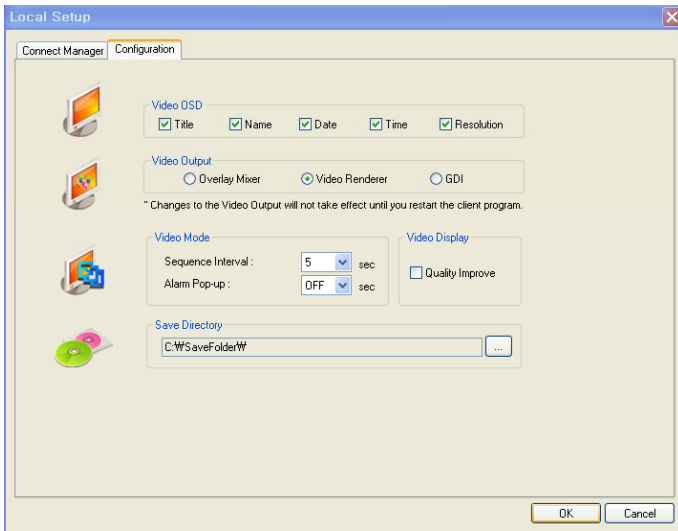
③ Input DVR information.(name, IP, port, ID, PW)



④ Set camera position, check option and press 'ADD'.

⑤ New DVR list is shown on the left upper side.

Configuration



① Video OSD : Select screen information. (title, name, date, time)

② Video output : Select video output method.

- Overlay Mixer : Output without passing through CPU.
- Video Renderer : Output through CPU.
- GDI : When you cannot see video by upper 2 way, use this way.

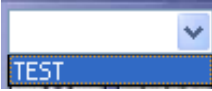
③ Video mode

- Screen switching interval : During the monitoring, select screen rotation interval time(2~300sec.)
- Alarm pop-up : Pop-up time of alarm happened channel on (2~60sec.) /off.

④ Saving Directory : Designate remote PC backup image saving folder.

REMOTE SW LOCAL SETUP

Selection Network ID



- Select I/D to Connect Server.
- I/D can be Add, Change, and Delete at Setup.

TIP ※ Multi DVR Client 4EA DVRs can be control the live view, search the data, backup data and setup about each channel at the same time.

Screen Division Selection



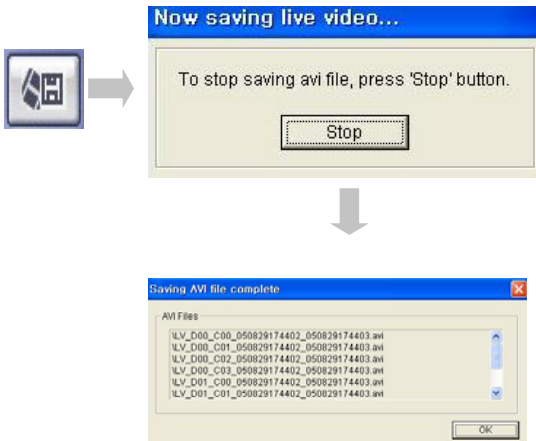
- 1*1 View : Showing One (1) Video which User Selected.
(Selection Video by Camera Selection Button)
- 4*4 View : 4 Screen Division Mode.
- 9*9 View : 9 Screen Division Mode.
- 16*16 View : 16 Screen Division Mode
- 32*32 View : 32 Screen Division Mode
- 64*64 View : 64 Screen Division Mode
- Auto switch : Screen Mode Showing One by One (Same at division mode)
- Manual switch : Screen Mode Showing One by One by click manually.
- Full Screen View : Present Video Move to Full Screen Mode.
Mouse Double Click when Return Previous.
- *Mouse Double Click Make the Same Function as Full Screen.

PTZ CONTROL



- P/T/Z Controller : Camera P/T/Z Control by Direction Keys
- FOCUS/ZOOM Select Button : Focus or Zoom Control by +,- Button
- +,- Control Button : Focus or Zoom Control

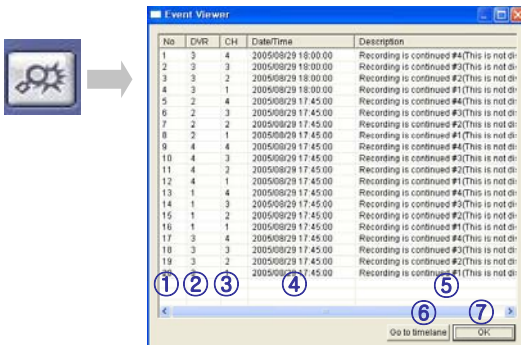
AVI File Conversion



- Click AVI Conversion Button to Start AVI File Conversion.
- During AVI Conversion Showing a Message and before Click 'Stop' Save AVI File continuously .

- 'Press 'Stop' to Open Designate File Name & Saving Location, and Save AVI File.
- Saved AVI File can Open Ordinary Moving Picture Player or Backup Player.
- Moving Picture Player Codec Version Need Higher than Divx 5.1 & IMM4 Codec.

Event Viewer



- ① Indicate Event Occurred Order No.
- ② Indicate Event Occurred DVR No.
- ③ Indicate Event Occurred Camera No.
- ④ Indicate Event Occurred Time & Date
- ⑤ Indicate Event Detail Description
- ⑥ After Select Event, Move Search Bar in Search Mode
- ⑦ Return to Search Main to Play Selected Event Image

REMOTE SW SEARCH

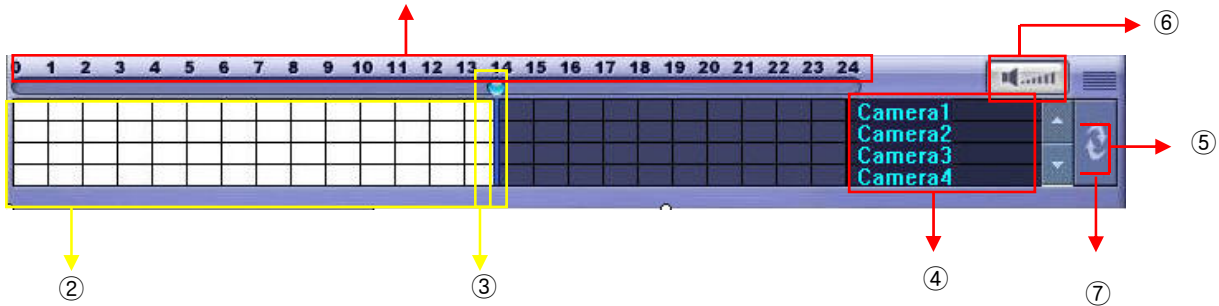
Search Function Introduce



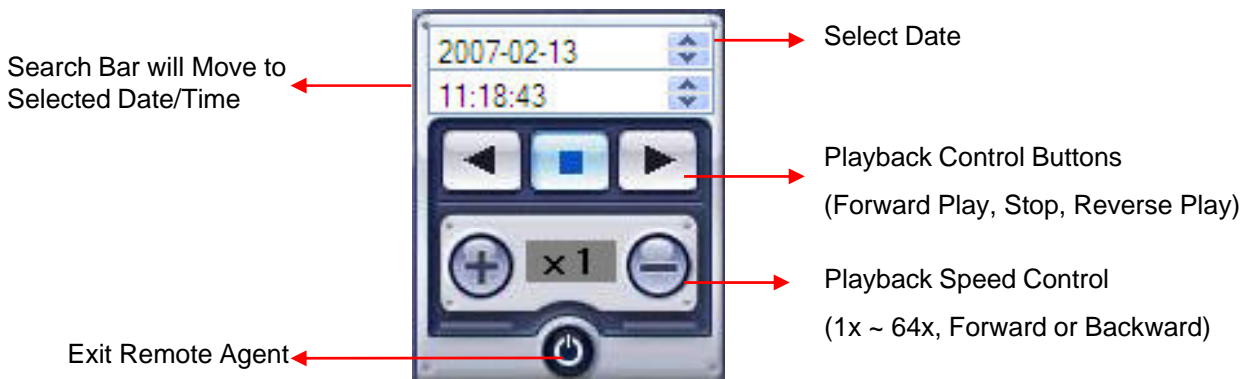
- ① Search Screen Playing Selected Video.
- ② Search Bar Search & Indicate Camera Recording Situation by Time Bar .
- ③ LIVE Return to Watch Mode.
SETUP Open Setup to Change Network Setup or Option.
- ④ Screen Division Selection Change Playing Screen Division Mode .
- ⑤ SEARCH Option Backup Video or Search Event.
- ⑥ Camera Selection Button Select Camera at the 1*1 View .
- ⑦ Quick Search Find Image to Designate Date & Time.
- ⑧ Search Controller Control Playing Video.

REMOTE SW SEARCH

Search Method

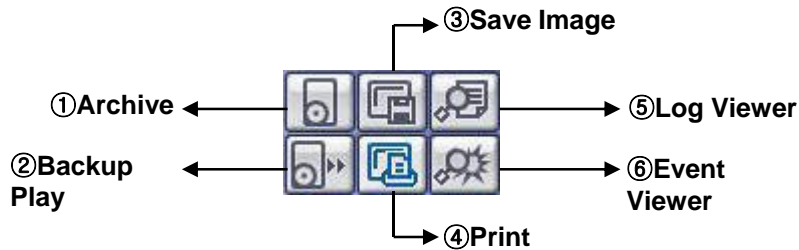


- ① Indicates the Time of Day (0 ~ 24 hours) on Search Timeline.
- ② Indicates Recording Mode (Blue : No Recording, Red: Recorded Images Present)
- ③ Search Bar : Drag bar with the mouse to search through recorded video on the timeline.
- ④ Indicates each individual channel on the timeline.
- ⑤ If there are 5 or more channels, you may scroll through the channels using the arrow buttons.
- ⑥ Adjust the volume of the audio playback (if audio is present in the recording).
- ⑦ Refresh Recording Information Window

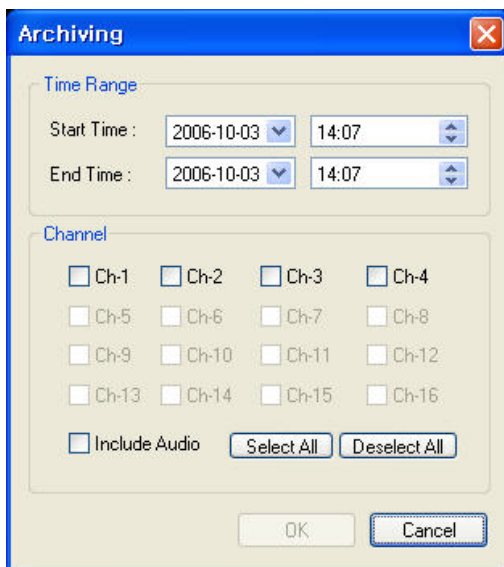


REMOTE SW SEARCH

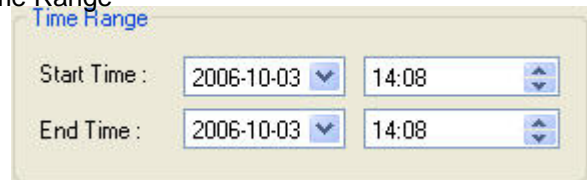
Search Option



- **Archive** – Backup Image from Server to Remote PC.



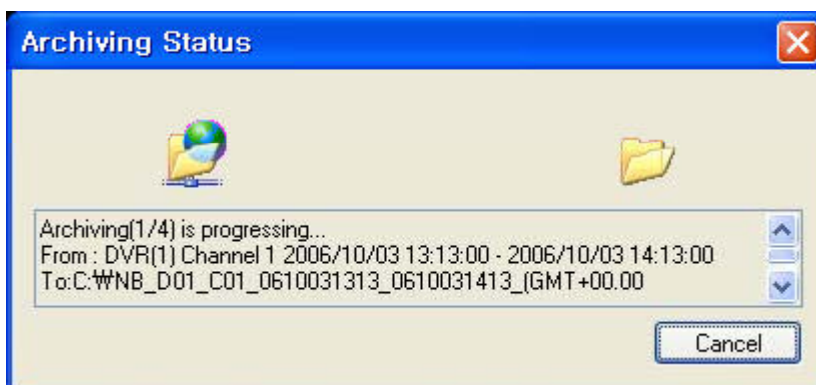
• Time Range



- Enter the Starting and Ending Date/Time.

- Channel : Check each channel to include in the Archive.
- Include Audio : (check/uncheck) to include Audio in Archive.
- Select All / Deselect All : Select/Deselect All Channels.

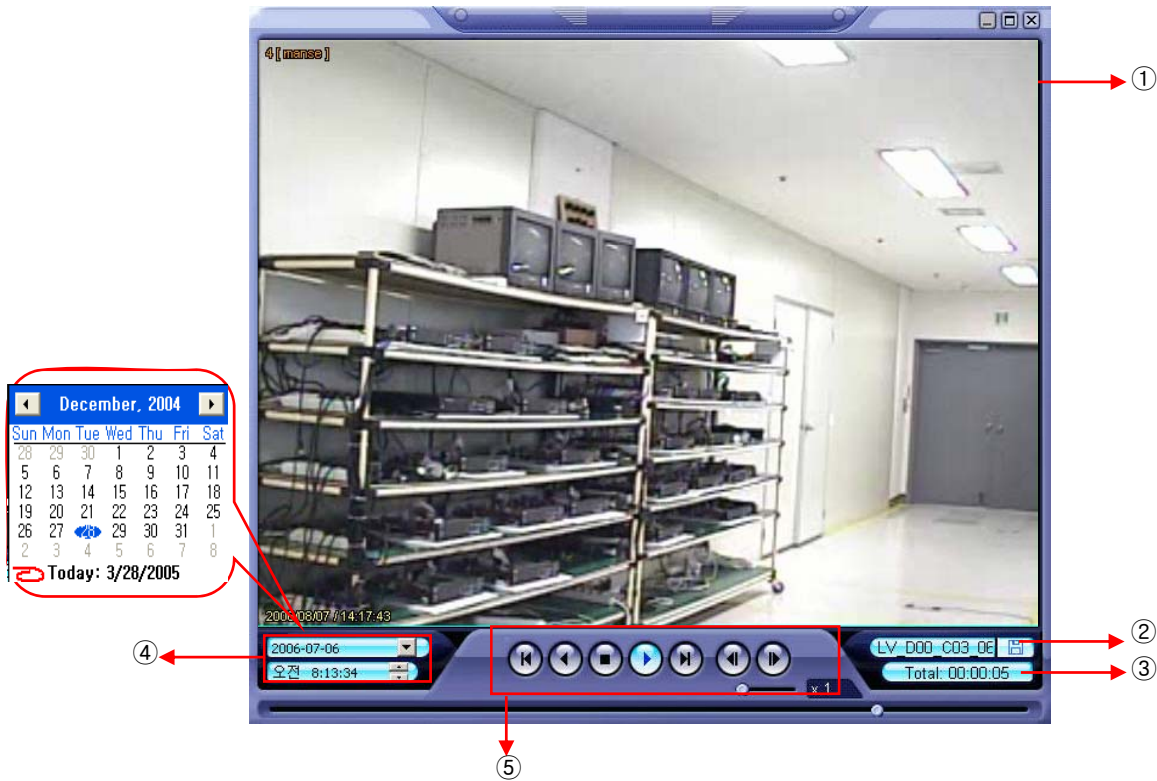
• Press OK to begin the Archiving process. As each AVI file is written to the PC, the system will display status.



• When the Archiving process has completed, the newly-created AVI files will be available for viewing.

REMOTE SW SEARCH

- Backup Play (DVR Player) – Transfer to DVR Player

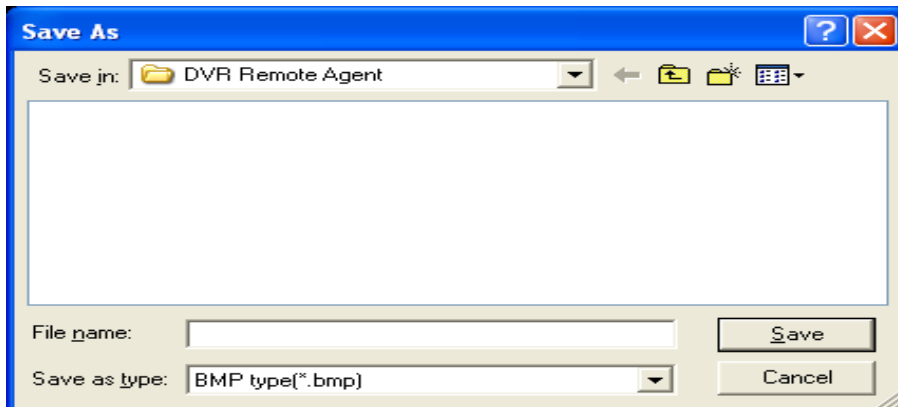


- ① Showing Image (Possible to Only 1*1View Mode).
- ② Backup File Open to Play First Video.
Ex. : ch02_04131730_04131735.rec
(Backup File for # 2 ch. Apr.13, 17H30M ~17H35M)
- ③ Indicate total playing time. Total: 00:02:00
- ④ Indicate Present Time & Date and Possible to Search Time & Date.
- ⑤ Search Controller, the Same Way of Previous Search.

Tip

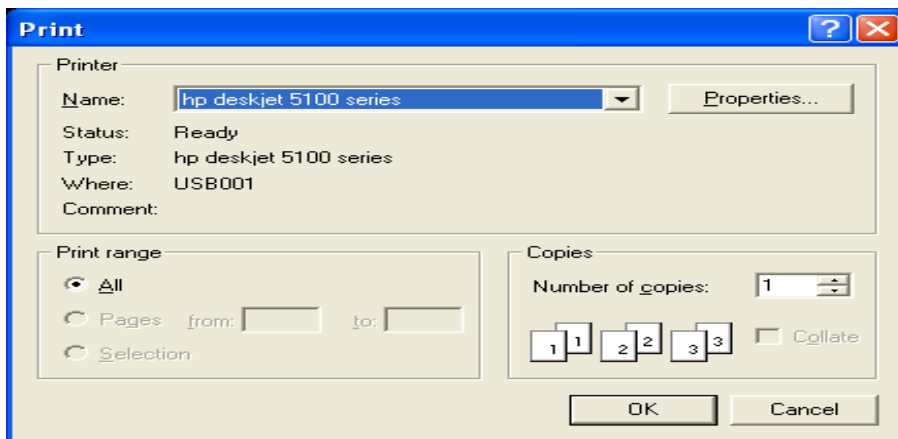
- Backup Player can be run independently of the Remote Agent software.

- Save Image – Capture Image and Save to Local PC



- Click 'Save Image' Icon During Playing Video.
- Designate File name, File Type (JPG,BMP), and Location and Press Saving.
- Conversion and Saving Image from Remote Viewer.

- Print Image – Present Image Capture and Print Out Image



- During Play Video, Click 'Print Image' .
- After Selecting Printer, Start Image Printing.
- Print Out Remote Viewer Image.

REMOTE SW SEARCH

- Log Viewer – Find Video from the DVR Event Log.

The screenshot shows the 'Search Log' window with the following components:

- Search Range:** Start Time (2006-10-03 13:16:35) and End Time (2006-10-03 14:17:35).
- Search condition:** Alarm, Motion, Timer, and System (all checked).
- Search Button:** A button labeled 'Search'.
- Table:** A table with columns No, CH, Date/Time, and Description. It contains four rows of event data.
- Navigation:** Buttons for '<<', '>>', 'Go to timeline', and 'OK', along with a page selector showing '1'.

No	CH	Date/Time	Description
1	.	2006/10/03 13:47:34	Remote Log Off
2	.	2006/10/03 13:47:35	Remote Log On
3	.	2006/10/03 14:04:48	Remote Log Off
4	.	2006/10/03 14:05:03	Remote Log On

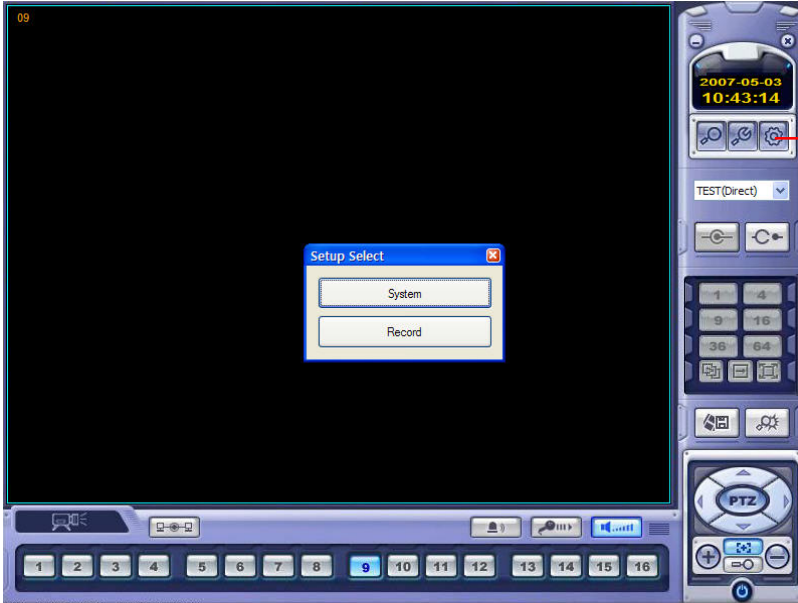
- ① Select Starting Date/Time and Ending Date/Time from which to search for Event Log events.
- Press Search Button to Search and View Search Results.
- ② Choose the DVR to Search.
- ③ Indicates the order in which events in the Event Log occurred.
- ④ Indicates the Camera # on which the event occurred.
- ⑤ Indicates the Date/Time when the event occurred.
- ⑥ Description of the event.
- ⑦ Move to Previous Page of Search results.
- ⑧ Move to Next Page of Search results.
- ⑨ Select a page of Search results to view.
- ⑩ Go to Selected Event on the Search Timeline.
- ⑪ Return to Search Window.


- Event Viewer - Showing Present Event in Server & Find Image

No	DVR	CH	Date/Time	Description
1	shin-0	4	2006/10/03 14:15:00	Recording is continued #4(This is not dis
2	shin-0	3	2006/10/03 14:15:00	Recording is continued #3(This is not dis
3	shin-0	1	2006/10/03 14:15:00	Recording is continued #1(This is not dis

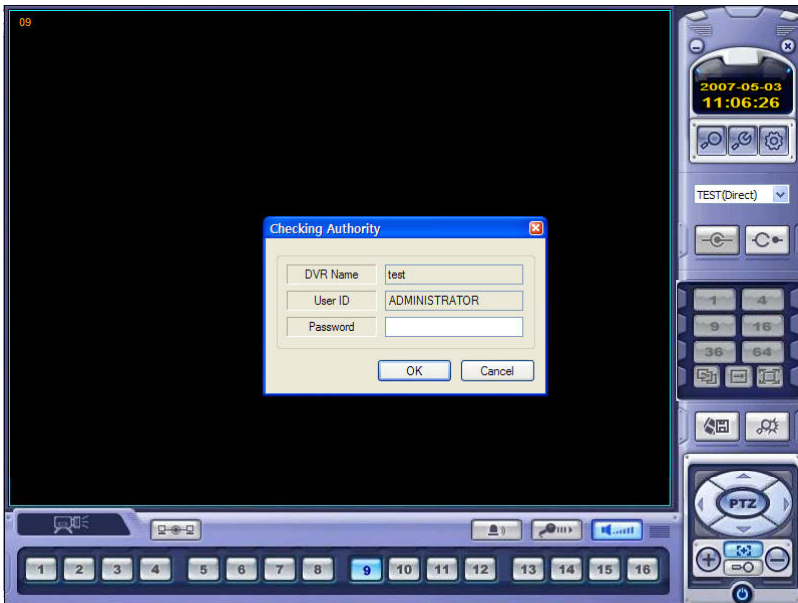
- ① Indicates the order in which events occurred.
- ② Indicates the DVR # on which an event occurred.
- ③ Indicates the Camera # on which an event occurred.
- ④ The Date/Time during which the event occurred.
- ⑤ Description of event.
- ⑥ Go to Selected Event on the Search Timeline.
- ⑦ Return to Search Window.

REMOTE SW DVR SYSTEM SETUP



Press  button and it shows left screen.

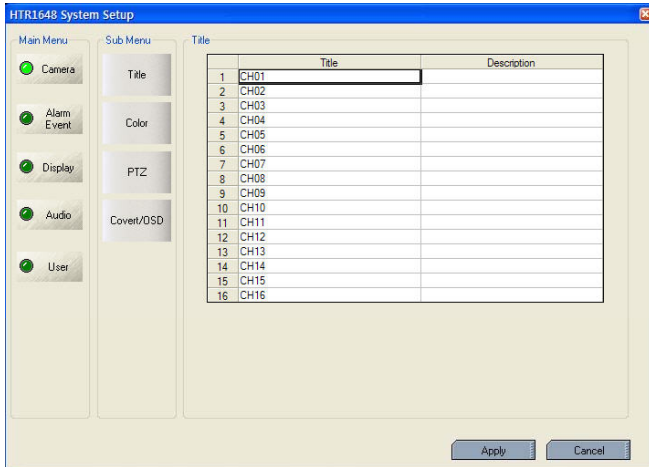
Select the System setup or Record setup.



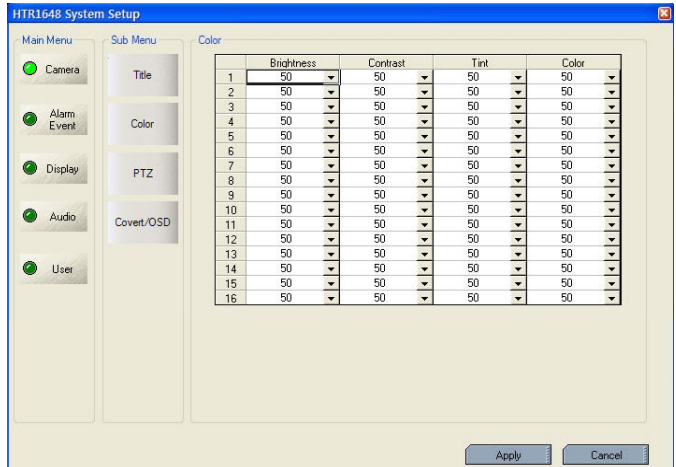
Click the "System" icon.
Input the Password. (Current default password is none.
So click the "OK" w/o inputting the password)

REMOTE SW DVR SYSTEM SETUP

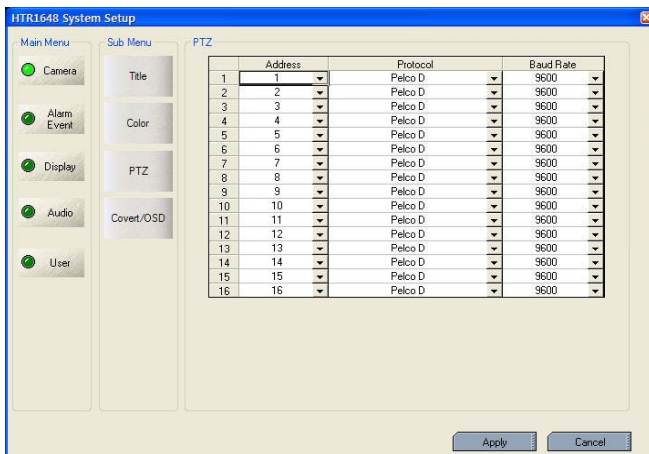
Camera



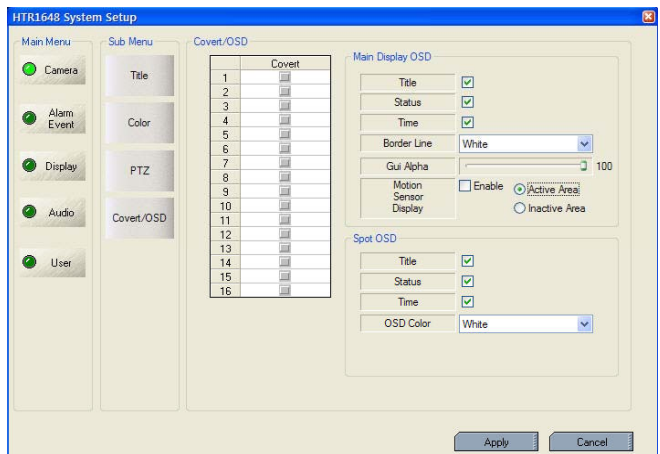
Title: Input the name and description after selecting the channel with mouse.



Color: Select the Brightness, Contrast, Tint, Color each channel.



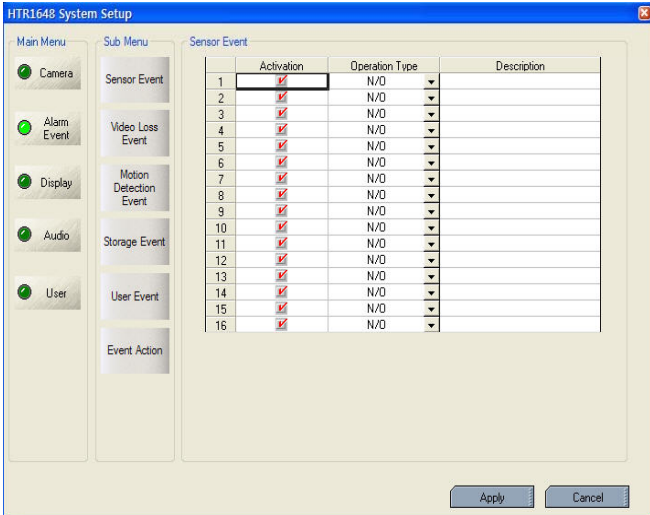
PTZ: Select the address, protocol, Baud rate each channel.



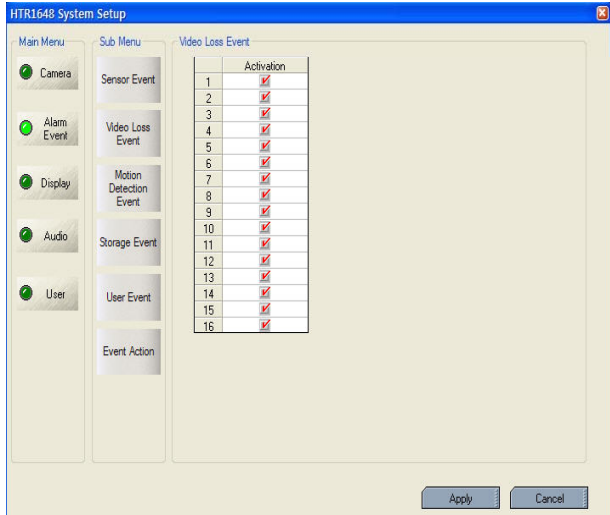
Covert/OSD: Select the covert and main display, spot OSD setup.

REMOTE SW DVR SYSTEM SETUP

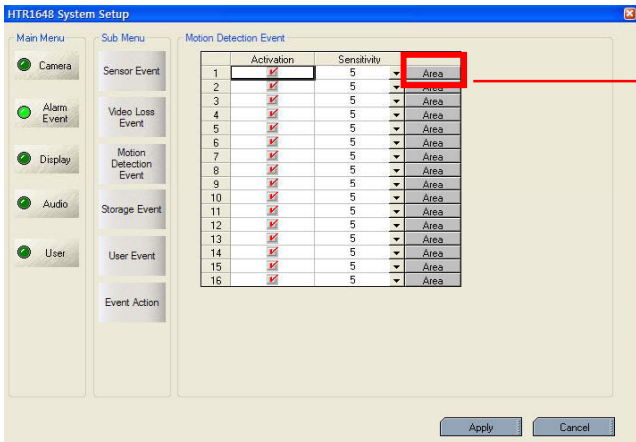
Alarm/Event



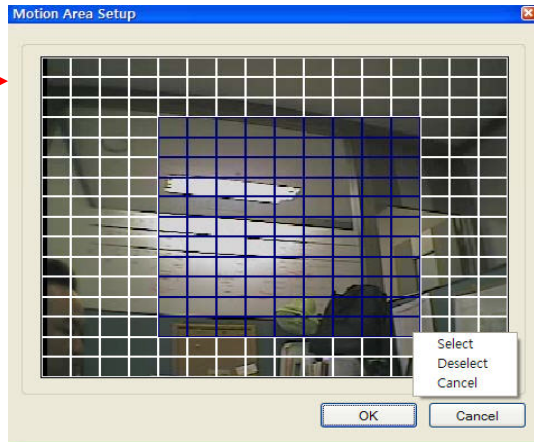
Sensor Event: Select the Activation, Active State (N/C, N/O-It is related with sensor type) and input the description.



VideoLoss Event: Select the video loss Activation.



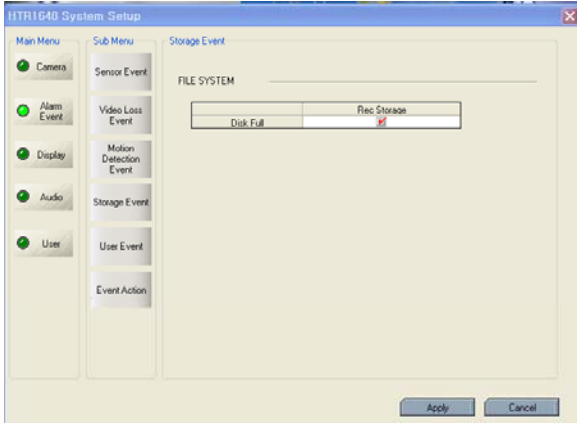
Motion Detection Event: Select the Motion Detection Activation and Sensitivity(1~10) and Motion Area.



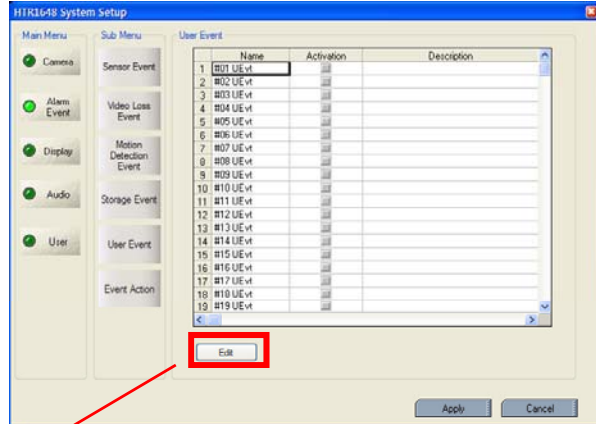
Select the "AREA" icon. It shows above screen. Select the motion area by Mouse drag then choose one of menu (select, deselect, cancel)

REMOTE SW DVR SYSTEM SETUP

Storage Event

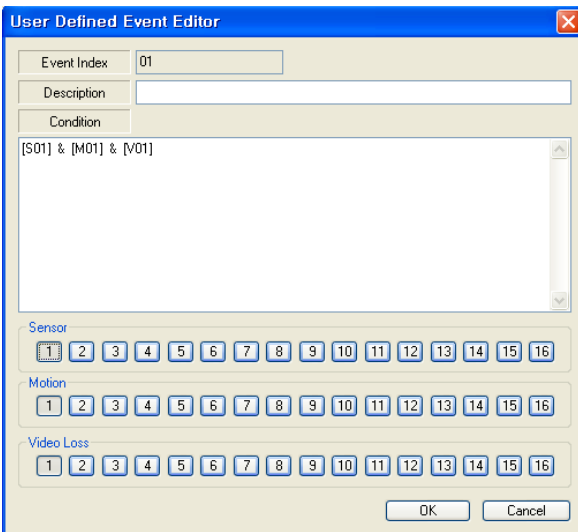


- User Event



Disk Full: When disk full, Activation On/Off.

Select the user event Activation



Click the "Edit" then it shows above screen.

The operator can make the User Defined Event with current event's mixing.

When happen the over two events at the same time, the operator can setup how it work.

(Mixing condition is "AND" not "OR")

Setup the detail configuration after entering the "Editor" with clicking the "EDIT" button.

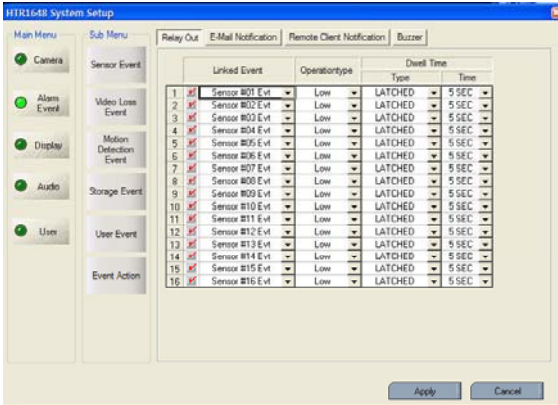
Select the Alarm, motion, Videoloss, Internal HDD, External HDD, User Defined Event as user want.

After selecting it, action type can setup from Event Action Setup.

REMOTE SW DVR SYSTEM SETUP

- Event Action

* Relay out



- Select the event that want to assign the action.

- Select the Activation on/off.

- Active state: Select the operation type(High / Low)

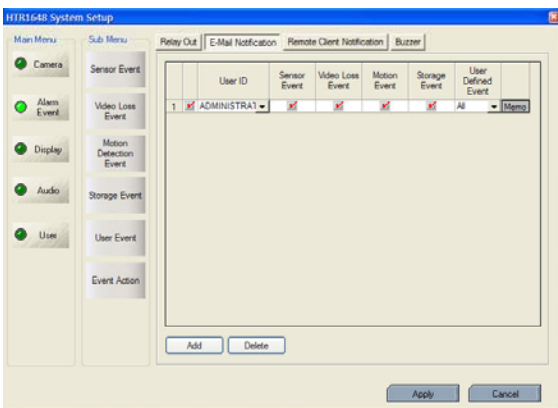
- Dwell: Select the type and Action Time.

Transparent : It work from Event start time to Event end time.

Latched : It work during selected period.

(1 ~300 second and until pressing any key)

* E-mail notification



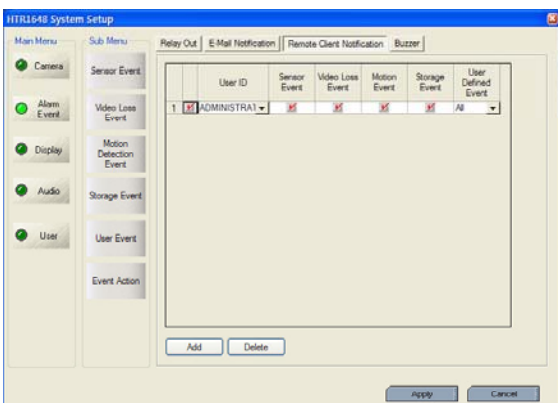
- Setup the User ID that want to receive the each event.

-Press " ADD" button.

- After selecting added user ID, select the each event (Sensor(Alarm), Videoloss, Motion, Storage and User Defined Event) and then check the Activation on /off.

- Registered User can be deleted by Pressing the "DELETE" button.

* Remote client notification



- When happen the selected event, it notify the event to Remote client.

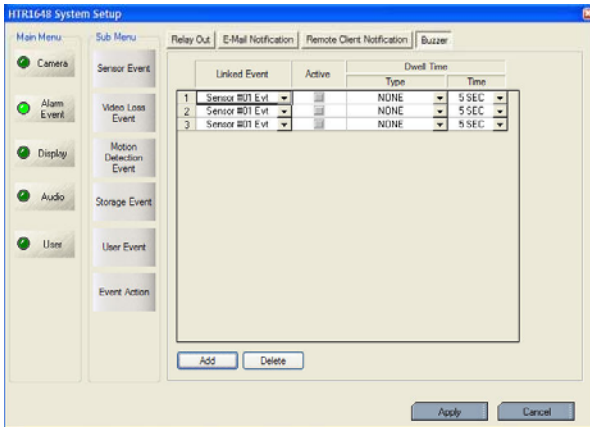
- Press " ADD" button.

- After selecting added user ID, select the each event (Sensor(Alarm), Videoloss, Motion, Storage and User Defined Event) and then check the Activation on /off.

- Registered User can be deleted by Pressing the "DELETE" button.

REMOTE SW DVR SYSTEM SETUP

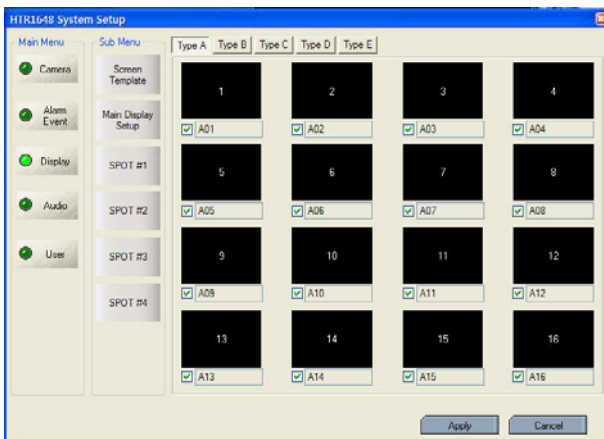
* Buzzer



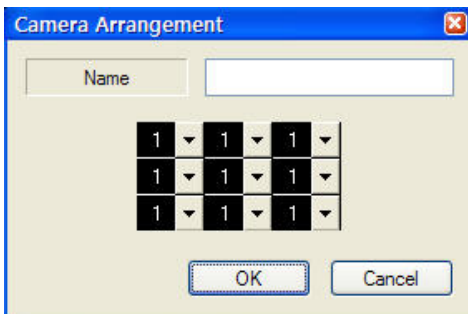
- When happen the selected event, select buzzer on/off.
- After selecting the event(Alarm, motion, video loss, User Defined Event) that want to buzzer, select the activation on/off.
- Select the buzzer type (Latched, Transparent)

DISPLAY

- Screen Template



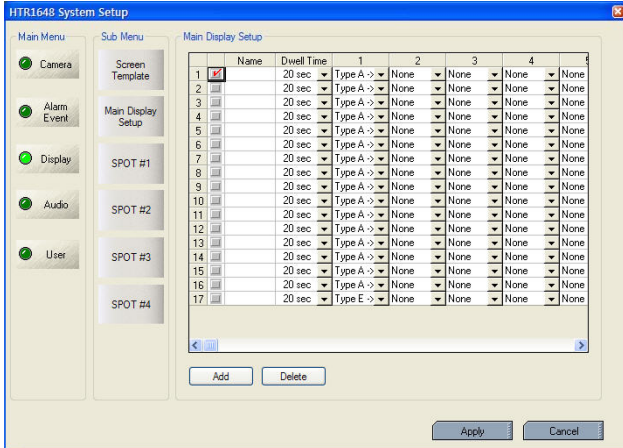
- Select the screen division(typeA,B,C,D,E)
- Double Click at the location that operator want to change.
- Then screen template is made or changed.
- The operator can make new screen template or modify the current screen template .



- Double click the template that want to modify.
- Input the name.
- Select the channel from screen template.
- Click the "OK".

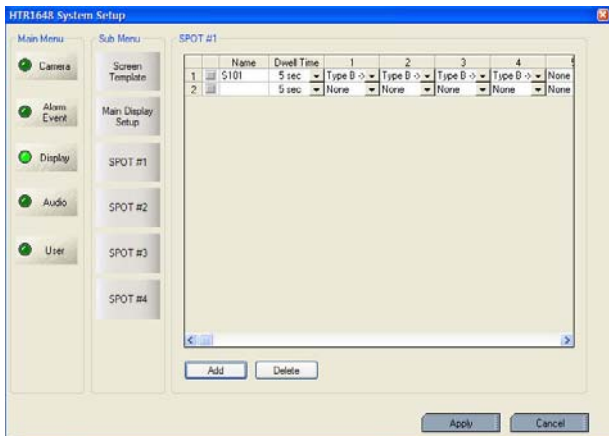
REMOTE SW DVR SYSTEM SETUP

- Main Display Setup



- Press the ADD button or select the current list.
- Select the name and dwell time.
- Select the new list.
- Select the screen template that want to do the sequence each channel.
- The operator can add Max.16EA screen template as same method.
- When pressing the DELETE button after selecting the list, list is deleted.
- The Max. list Number is 16EA.
- For selecting display, check the square.

- Spot#1~4 Sequence



In case of advance spot, how to setup is almost same with main display sequence.

The different thing is only one.

The screen template that can select is only two types. (1,4 division).

- Press the ADD button or select the current list.
- Select the dwell time.
- Select the screen template that want to do the sequence.
- The operator can add Max.16EA screen template as same method.
- When pressing the DELETE button after selecting the list, list is deleted.

* The Max. list Number is 16EA each spot channel.

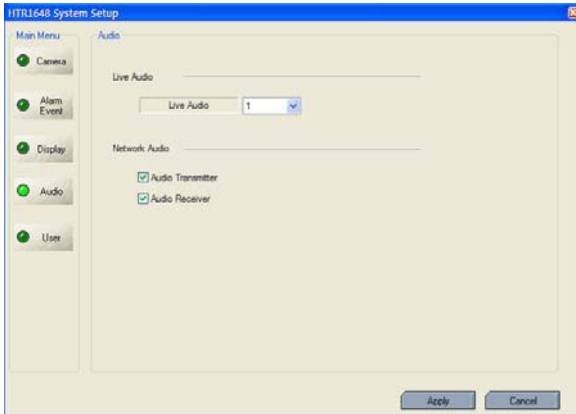
- How to play and stop the sequence

After clicking mouse right button from live display, select the "SEQUENCE PLAY" or "SEQUENCE STOP"

Additionally, press the "SEQ" button from DVR.

REMOTE SW DVR SYSTEM SETUP

AUDIO



- Live Audio

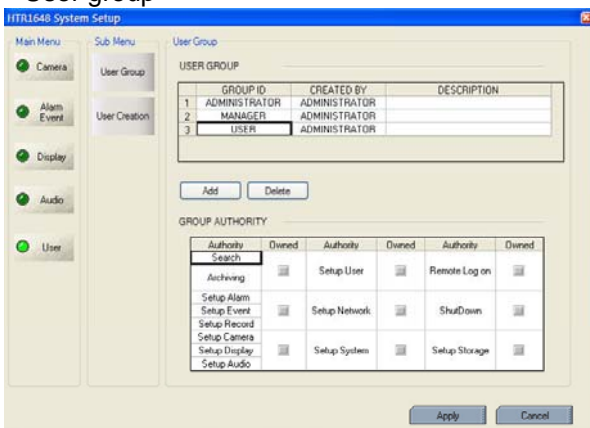
Select the Live audio channel.

- Network Audio

Select the audio transmitter and receiver

USER

- User group



Default user group(ADMINISTRATOR, MANAGER, USER) can not be deleted.

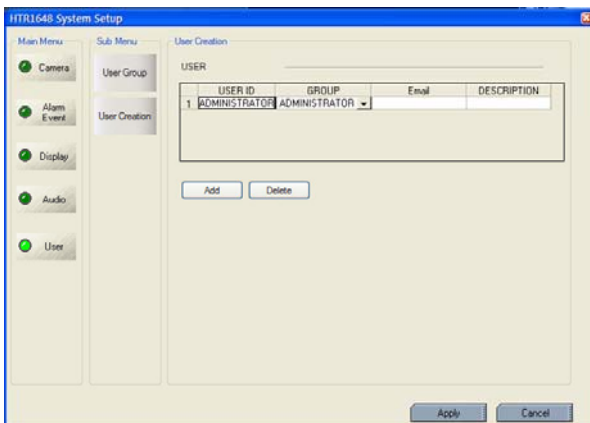
After selecting "ADD" button, the operator can make the new user group with new authority.

From below section, the operator can select each authority.

After selecting the new group, check the authority that want to have. Then click the "apply" button.

How to EDIT is almost same with ADD after selecting the "EDIT" button.

- User

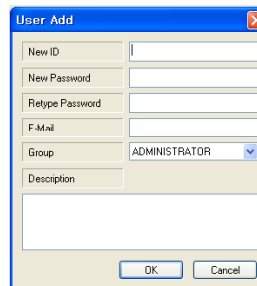


The operator can add, delete or edit the new user.

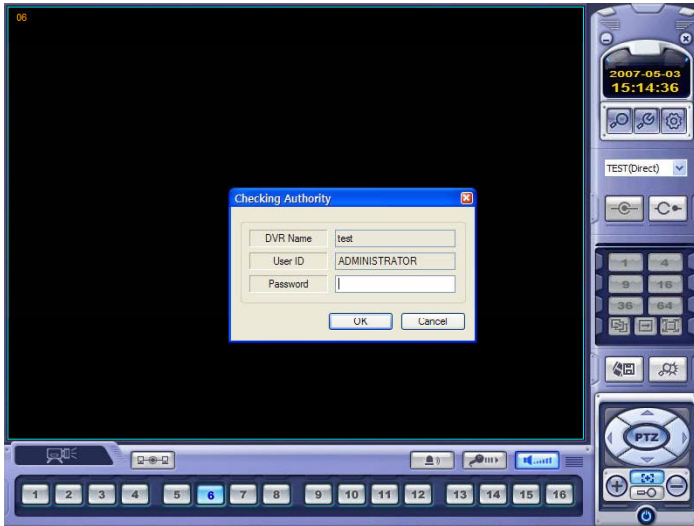
When selecting the "ADD" button, it shows "add user" screen.

After inputting the ID,PW, click the "OK".

Then select the Group and input the E-mail address.

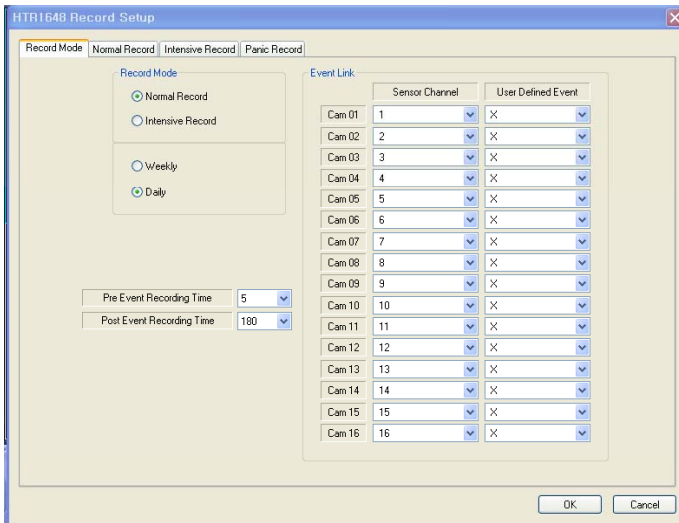


REMOTE SW DVR RECORD SETUP



Input the Password.
 (Current default password is non.)
 So click the "OK" w/o inputting the password)

Record Mode



- Select the "record mode" and "weekly/daily".

In case of selecting the "Normal Record" from record mode, The operator can not enter "Intensive Record" setup.

Oppositely in case of selecting the "Intensive Record", The operator can not enter "Normal Record" setup.



REMOTE SW DVR RECORD SETUP

- Weekly/Daily

The operator can select the "Weekly" and "Daily" record setup from "Normal Record" and "Intensive Record" setup.

So the DVR will record as daily and weekly setup configuration of "Normal and Intensive record" setup mode.

Pre-Event Recording Time: When the DVR is not in continuous recording mode, this setting determines the amount of footage that is always recorded before an event occurs. (motion detection, alarm input etc.)

Post- Event Recording Time : When the DVR is not in continuous recording mode, this setting determines the amount of footage that is always recorded after an event occurs. (motion detection, alarm input etc.)

- Panic Recording: Disable : Not use the Panic recording function

Manual: It work by pressing the Panic button from Remote controller or Front panel and sensor. Press the Panic button again to stop the panic recording.

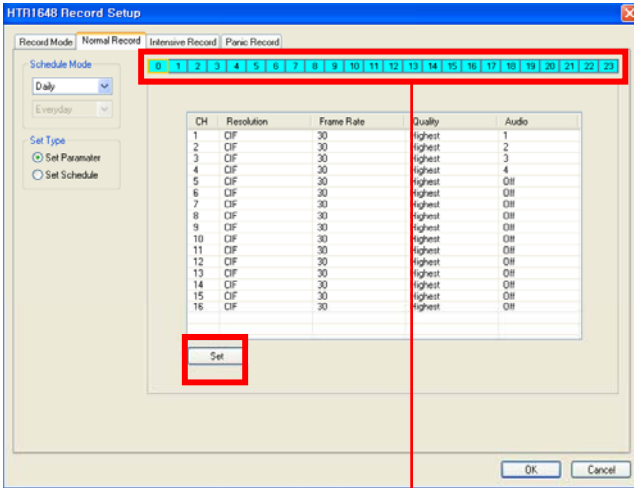
Auto: After starting the panic recording, Panic recording will be stopped if assigned time is passed automatically.

- Panic Recording Time: It is related with "Auto" option of Panic recording.

- Event Link: Select the sensor channel and user defined event each channel.

REMOTE SW DVR RECORD SETUP

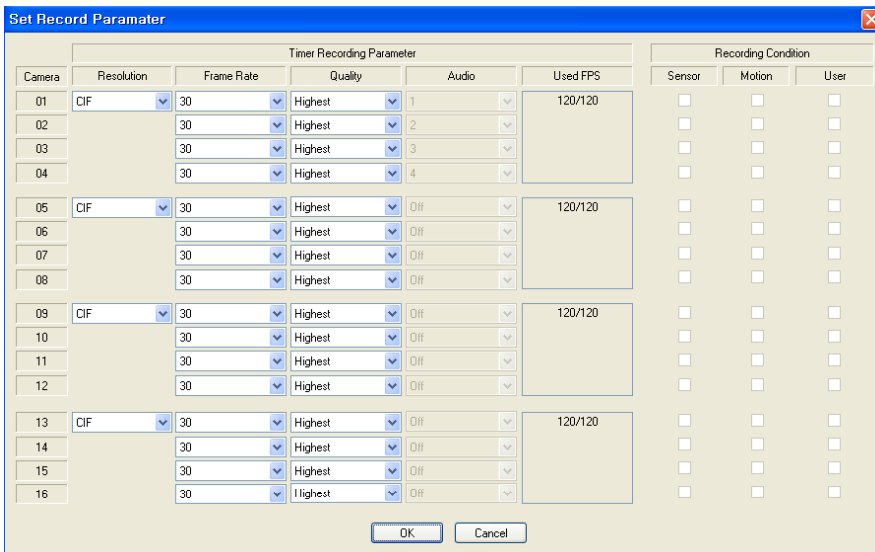
Normal Record



- Select the Daily/Weekly.
- Select the Parameter/Schedule

- Parameter

- Drag the time that want to setup by mouse. In case of setup differently each time, the color is different

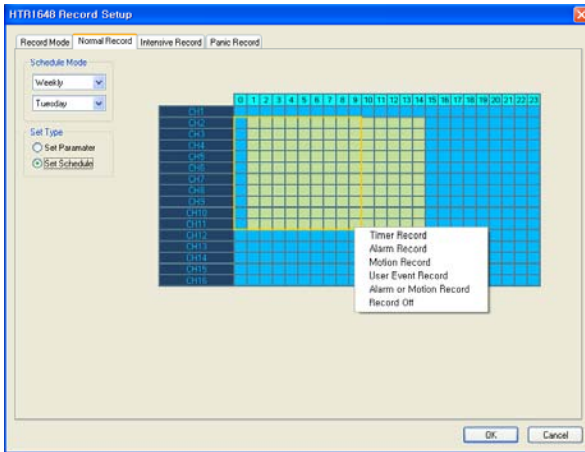


- Click the "SET" icon. Then it shows above screen.
- In case of recording setup, the operator should setup as 4 divided parts.
- The operator can setup Max.CIF, 120FPS each divided part.
- Select the Resolution.
- Select the Frame Rate
- Select the Quality. (low, standard, high, highest)
- The operator can setup other divided part as same method.
- In case of Audio setup, it is assigned at Nr.1,2,3,4 Channel basically. (It can not be changed)

In case of weekly, it is almost same with daily setup. It can setup each date.

REMOTE SW DVR RECORD SETUP

- Schedule



The operator can select recording type (Timer, Motion, Alarm, User Defined, Alarm or Motion and Record off) each time, channel.

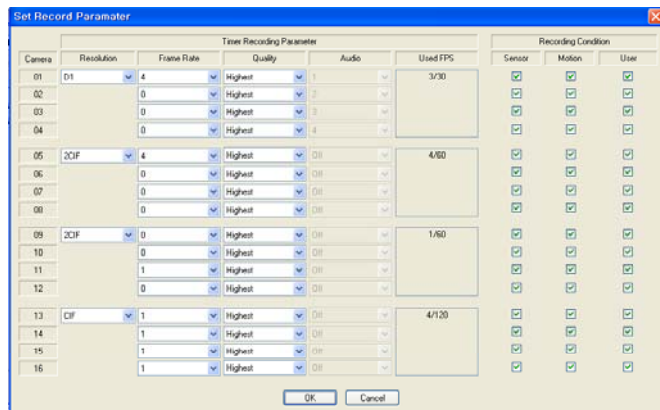
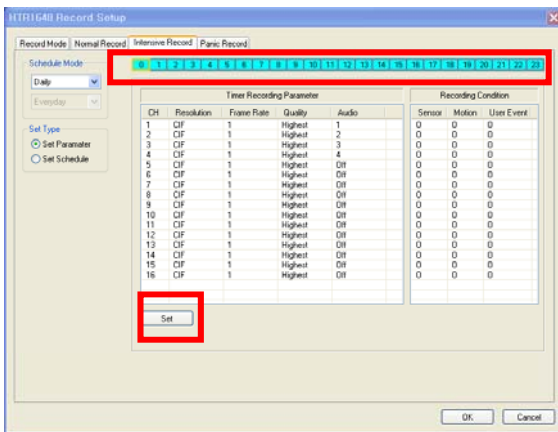
Drag the section that want to select and then click the mouse right button.

Then recording option will be appeared. The operator can select the recording option each time and channel..

REMOTE SW DVR RECORD SETUP

Intensive Record

- In case of this record, record will be centralized at channel that event is happened as event priority.
- Parameter
- Drag the time that want to setup by mouse. In case of setup differently each time, the color is different



The setup is same with normal recording setup.

It record as setup under normal condition. But when happening the event on channel, the Recording setup of the channel that event is happened will be changed as D1, 30 FPS automatically.

If happening the event from some channels at the same time, it will share the max. Recording rate properly.

In case of recording setup, the operator should setup as 4 divided parts.

The operator can setup Max.CIF,120FPS each divided part.

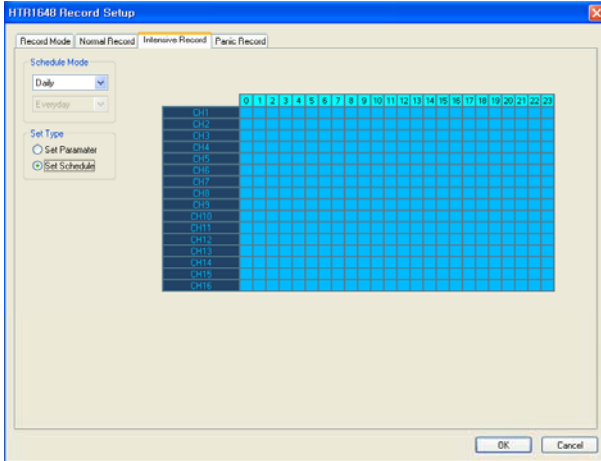
- Select the Resolution.
- Select the Frame Rate
- Select the Quality. (low, standard, high, highest)
- The operator can setup other divided part as same method.
- In case of Audio setup, it is assigned at Nr.1,2,3,4 Channel basically.
(It can not be changed)

Select the Intensive recording condition with Alarm, Motion and User defined event.

- In case of weekly, it is almost same with daily setup. It can setup each date.

REMOTE SW DVR RECORD SETUP

- Schedule



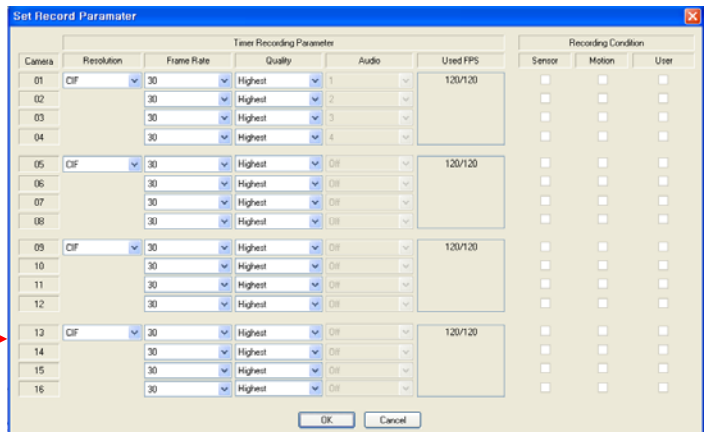
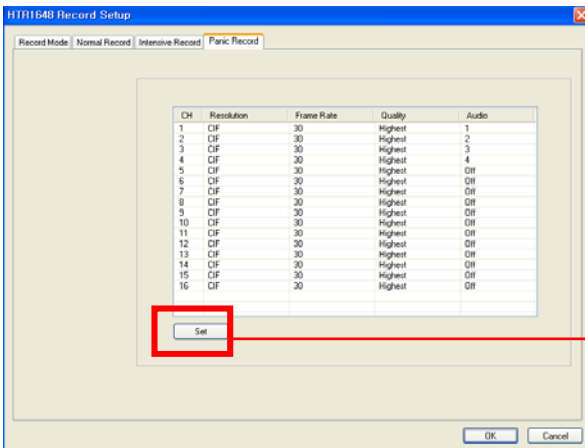
The operator can select the record on/ off each time, channel.

Drag the section that want to select and then click the mouse right button.

Then recording option will be appeared. The operator can select the recording on/off each time and channel.

Panic Record

When pressing the panic button or detecting the panic alarm, recording condition is changed as panic record setup.



In case of recording setup, the operator should setup as 4 divided parts.

The default setup is CIF, 30FPS.

Setup method is same with normal record setup.

The operator can setup Max.CIF, 120FPS each divided part.

- Select the Resolution.
- Select the Frame Rate
- Select the Quality. (low, standard, high, highest)
- The operator can setup other divided part as same method.
- In case of Audio setup, it is assigned at Nr.1,2,3,4 Channel basically. (It can not be changed)

WEB CLIENT SETUP

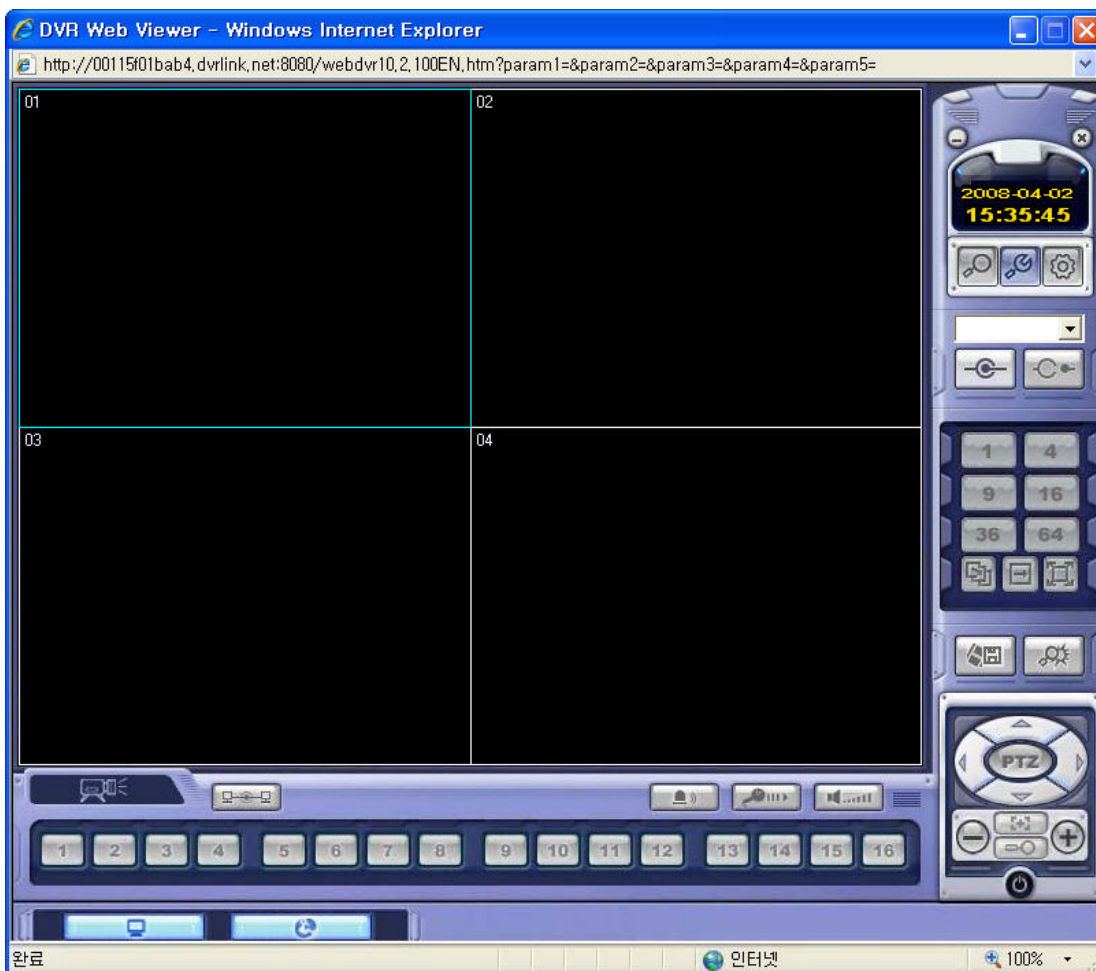
• WEB Client Connection

Input the IP Address or URL of the DVR in the Internet Explorer Address Bar.

If when user use the DDNS, input the URL with default port number (8080) like below.

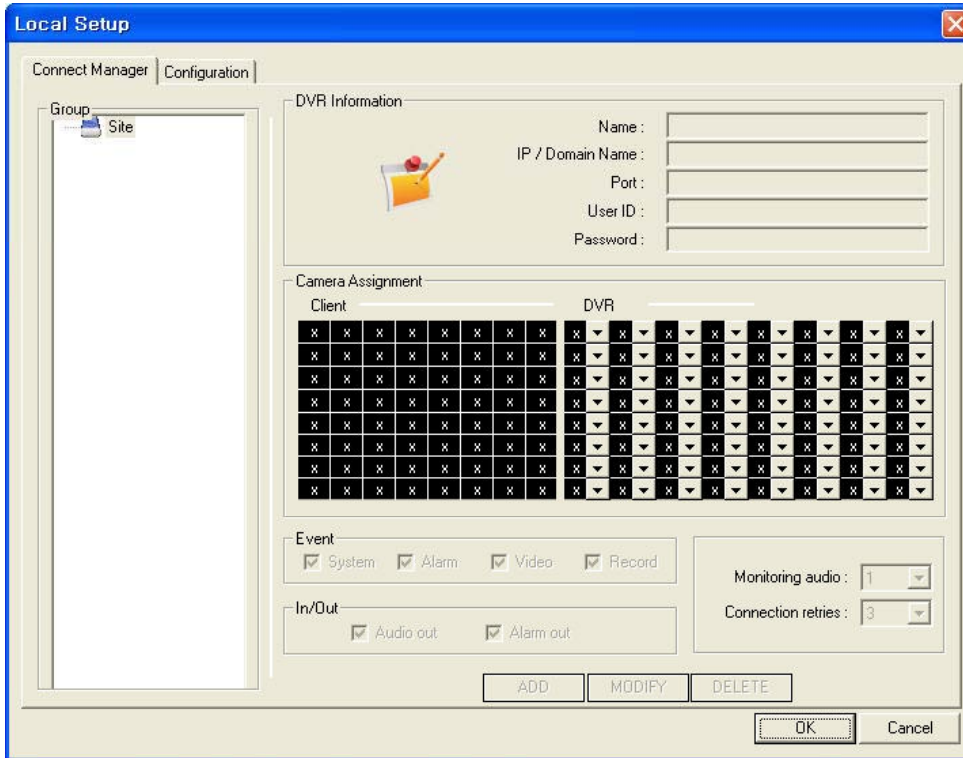
<http://00115FA1A4.dvrlink.net:8080>

Then a dialog will appear to confirm download of an ActiveX control. Please click 'Confirm' or 'Continue'.

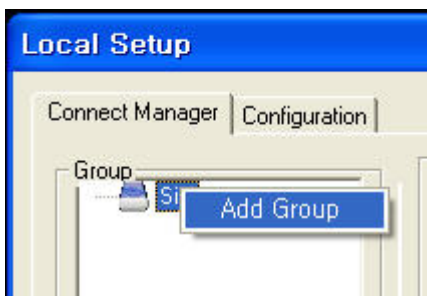


Then click the SETUP button. 

• **WEB Client Connection**



Click the right button of mouse on the Site in Group and click the Add Group menu like below.



Input the Group Name.



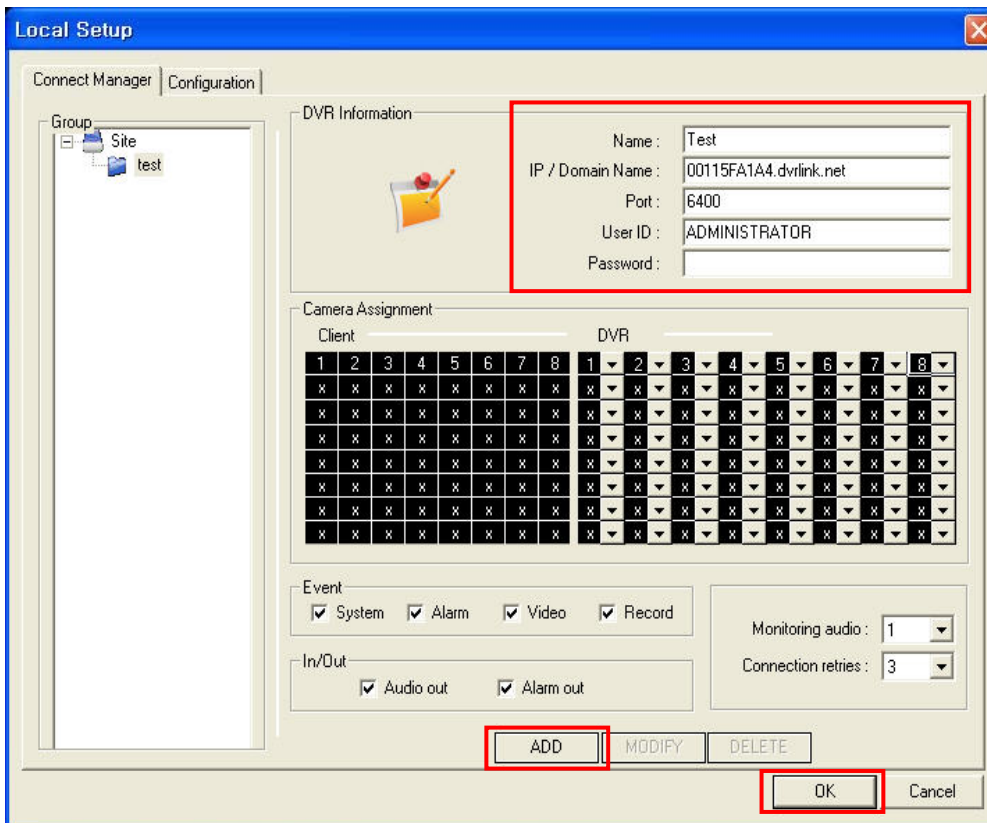
WEB CLIENT SETUP

• WEB Client Connection

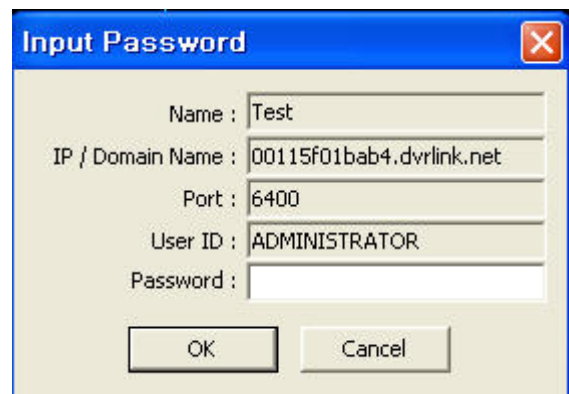
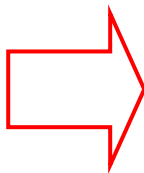
Click the Group name and input the DVR information.

* Input the default Port and User ID correctly. (6400, ADMINISTRATOR with NO PASSWORD)

Then click the ADD button and OK button.



Select the site name and click the connection button then input the password. (Default : No password)



WEB CLIENT SETUP

- **WEB Client Connection**

If the DVR information is correct, can see the connected screen like below.

